

Flanschwinkel und Winkelverschraubungen

Flanges and elbows

Flanschwinkel 90° Zinkdruckguss	Flanged elbow 90° zinc diecast parts	148 - 149
Winkel Messing 90° mit Innen- und Aussengewinde	Elbow nickel-plated brass 90° with inner and outer entry thread	150
Winkel 45° Messing mit Innen- und Aussengewinde	Elbow 45° nickel-plated brass with internal and external thread	151
Flanschwinkel 90° Kunststoff	Synthetic flanged elbow 90°	152

1

2

3

4

5

6

7

8

9

Flanschwinkel 90° Zinkdruckguss

mit 1 Anschlussgewinde metrisch

Material:	Zinkdruckguss
Dichtung:	NBR
Einsatztemperatur:	-20°C / +100°C
Schutzart:	IP 65
Eigenschaften:	Für spritzwasserdichte Montage an der Gehäusewandung mit Metallschrauben, Anschlussgewinde für Kabelverschraubung oder Schlauchverschraubung

Flanged elbow 90° zinc diecast part


with 1 entry thread metric

Material:	Zinc diecasting
Seal:	NBR
Temperature range:	-20°C / +100°C
Protection class:	IP 65
Properties:	For splash water-proof mounting on casing walls with metallic screws, entry thread for cable glands or connecting nipples

Anschlussgewinde metrisch

Entry thread metric



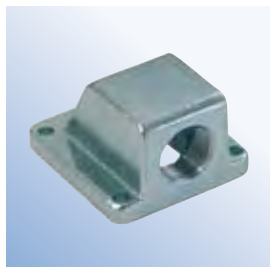
Art.-Nr.	G	B/C mm	D mm	F mm	A mm	H mm	I mm	K mm	L mm	M mm	
5517	M16x1.5	45 x 48	37	4.3	8	15.5	30	28	10.5	24	10
5520	M20x1.5	53 x 56	44	5.5	8	18.0	35	34	10.5	24	10
5525	M25x1.5	63 x 65	54	5.5	8	22.5	42	43	11.0	35	5
5532	M32x1.5	71 x 75	60	5.5	10	27.0	52	53	11.0	38	5
5540	M40x1.5	71 x 75	60	5.5	10	27.0	52	53	11.0	38	5
5550	M50x1.5	89 x 93	72	6.5	11	33.5	69	65	18.0	50	2
5563	M63x1.5	96 x 114	84	6.5	10	37.0	74	86	14.0	67	2


mit 1 Anschlussgewinde Pg

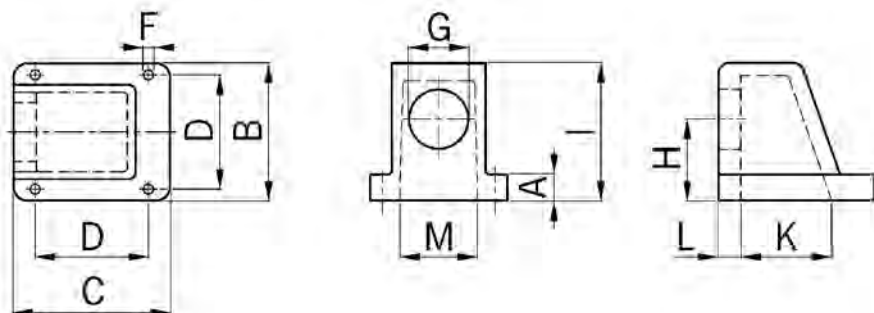
with 1 entry thread Pg

Anschlussgewinde Pg Anschlussgewinde Gasrohr

Entry thread Pg Gas-pipe entry thread



Art.-Nr.	G	B/C mm	D mm	F mm	A mm	H mm	I mm	K mm	L mm	M mm	
5509	Pg 9	45 x 48	37	4.3	8	15.5	30	28	10.5	24	10
5511	Pg 11	45 x 48	37	4.3	8	15.5	30	28	10.5	24	10
5513	Pg 13	53 x 56	44	5.5	8	19.0	35	34	10.5	24	10
5516	Pg 16	53 x 56	44	5.5	8	19.0	35	34	10.5	24	10
5521	Pg 21	63 x 65	54	5.5	8	23.0	42	43	11.0	35	10
5529	Pg 29	71 x 75	60	5.5	10	27.0	52	53	11.0	38	10
5536	Pg 36	89 x 94	72	6.5	11	34.0	69	65	18.0	50	10
5548	G 2"	96 x 114	84	6.5	10	37.0	74	86	14.0	60	2



Flanschwinkel 90° Zinkdruckguss

Mit 1 bis 3 Anschlussgewinden

Material: Zinkdruckguss
 Farbe: Hammerschlaglackiert grau
 Dichtung: NBR
 Einsatztemperatur: -20°C / +100°C
 Schutzart: IP 65
 Eigenschaften: Für spritzwasserdichte Montage an der Gehäusewandung mit Metallschrauben, Anschlussgewinde für Kabelverschraubung oder Schlauchverschraubung



Flanged elbow 90° zinc diecasting

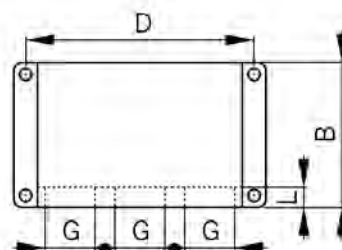
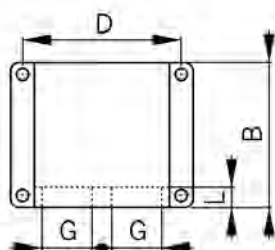
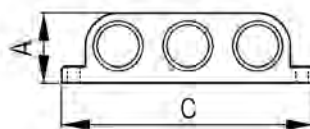
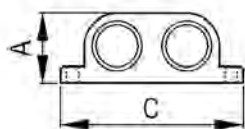
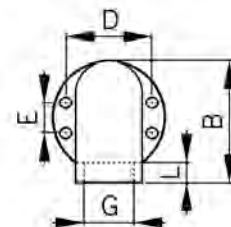
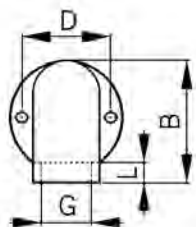
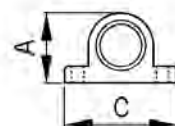
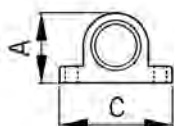
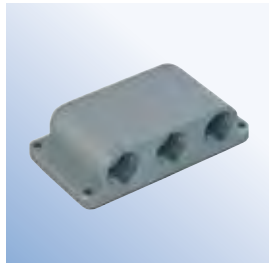
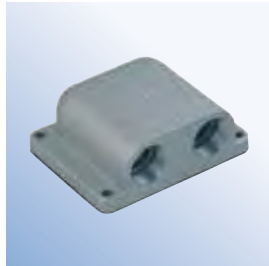
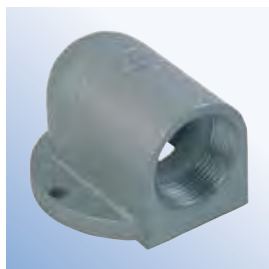
From 1 to 3 entry threads

Material: Zinc diecasting
 Colour: Hammergrey enamel
 Seal: NBR
 Temperature range: -20°C / +100°C
 Protection class: IP 65
 Properties: For splash water-proof mounting on casing walls with metallic screws, entry thread for cable glands or connecting nipples

Anschlussgewinde Pg

Entry thread Pg

Art.-Nr.	G	A mm	B mm	C mm	D mm	E mm	F mm	 mm	
5516.10	Pg 16	31	42	42	36.0	-	11	2x4.5	10
5521.10	Pg 21	40	60	60	52.5	-	12	2x5.2	10
5529.10	Pg 29	51.5	76	66	54.0	36	12	4x5.5	10
5536.10	Pg 36	62	90	85	73.0	30	12	4x5.5	10
5516.12	2xPg 16	34	70	91	79.0	58	10	4x5.5	10
5516.13	3xPg 16	34	70	124	111.0	56	10	4x5.5	10



Winkel 90° Messing mit Innen- und Aussengewinde

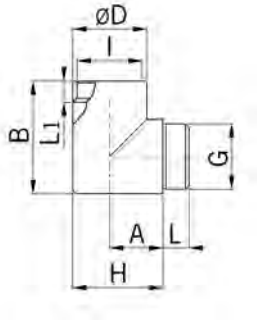
Elbow 90° nickel-plated brass with internal and external thread

Anschlussgewinde metrisch

Entry thread metric


Material: Messing vernickelt
 O-Ring : NBR
 Einsatztemperatur: -40°C / +100°C

Material: Nickel-plated brass
 O-ring : NBR
 Temperature range: -40°C / +100°C



mit O-Ring

with O-ring

Art.-Nr.	G	I	D mm	L mm	L1 mm	A mm	B mm	H mm	
5612	M12x1.5	M12x1.5	15	5.0	7	13	25	20	50
5617	M16x1.5	M16x1.5	19	6.5	7	16	29	26	50
5620	M20x1.5	M20x1.5	24	6.0	10	19	37	31	50
5625	M25x1.5	M25x1.5	29	7.5	10	23	42	37	25
5632	M32x1.5	M32x1.5	36	8.5	11	26	50	44	25
5640	M40x1.5	M40x1.5	46	9.5	17	34	67	57	10
5650	M50x1.5	M50x1.5	56	9.0	17	41	77	69	10


Anschlussgewinde Pg

Entry thread Pg



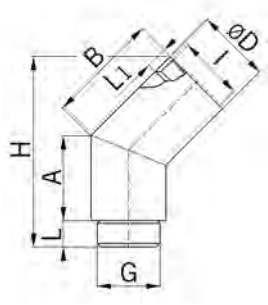
mit O-Ring

with O-ring

Art.-Nr.	G	I	D mm	L mm	L1 mm	A mm	B mm	H mm	
5607	Pg 7	Pg 7	16	7	7	13	23	21	50
5609	Pg 9	Pg 9	18	7	7	15	26	24	50
5611	Pg 11	Pg 11	22	8	8	18	31	29	50
5613	Pg 13	Pg 13	24	10	10	19	34	31	50
5616	Pg 16	Pg 16	26	10	10	20	36	33	50
5621	Pg 21	Pg 21	34	11	11	24	44	41	25
5629	Pg 29	Pg 29	41	11	11	28	52	49	20
5636	Pg 36	Pg 36	52	12	17	38	82	64	10

Winkel 45° Messing mit Innen- und Aussengewinde

Anschlussgewinde metrisch



Material: Messing vernickelt
 O-Ring : NBR
 Einsatztemperatur: -40°C / +100°C

Elbow 45° nickel-plated brass with internal and external thread


Entry thread metric

Material: Nickel-plated brass
 O-ring : NBR
 Temperature range: -40°C / +100°C



mit O-Ring

with O-ring

Art.-Nr.	G	I	D mm	L mm	L1 mm	A mm	B mm	H mm	
5717	M16x1.5	M16x1.5	19	6.5	7	13	18	26	50
5720	M20x1.5	M20x1.5	24	7.5	10	17	23	33	50
5725	M25x1.5	M25x1.5	29	7.0	10	18	25	36	25
5732	M32x1.5	M32x1.5	36	8.5	11	21	28	41	25


Anschlussgewinde Pg

Entry thread Pg



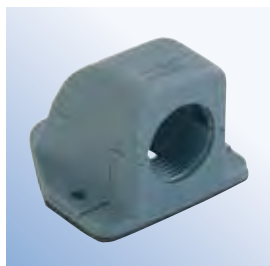
mit O-Ring

with O-ring

Art.-Nr.	G	I	D mm	L mm	L1 mm	A mm	B mm	H mm	
5711	Pg 11	Pg 11	22	8	11	16	20	30	50
5716	Pg 16	Pg 16	26	10	12	18	23	34	50
5721	Pg 21	Pg 21	34	11	12	21	26	39	25
5729	Pg 29	Pg 29	41	8	16	27	32	-	25

Material: Polyamid
 Dichtung: NBR
 Einsatztemperatur: -40°C / +110°C
 Schutzart: IP 65
 Eigenschaften: Der Flanschwinkel lässt sich zum Einführen der Kabel aufklappen und ermöglicht damit eine mühelose Montage

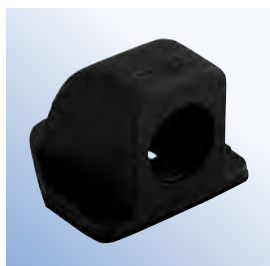
Material: Polyamide
 Seal: NBR
 Temperature range: -40°C / +110°C
 Protection class: IP 65
 Properties: The flanged elbow can be opened to insert the cables and therefore permits an effortless installation



**Anschlussgewinde metrisch
Grau**

**Entry thread metric
Grey**

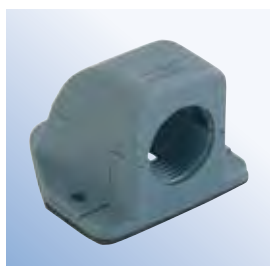
Art.-Nr.	G	A mm	B mm	C mm	D mm	E mm	F mm	H mm	
5500.20.17	M16x1.5	49	47	35	22	27	29	37	10
5500.20.20	M20x1.5	49	47	35	22	27	29	37	10
5500.20.25	M25x1.5	69	65	44	30	31	42	52	10
5500.20.32	M32x1.5	90	78	55	40	65	65	65	10
5500.20.40	M40x1.5	100	94	66	48	68	80	80	5
5500.20.50	M50x1.5	116	101	76	63	85	88	88	5



**Anschlussgewinde metrisch
Schwarz**

**Entry thread metric
Black**

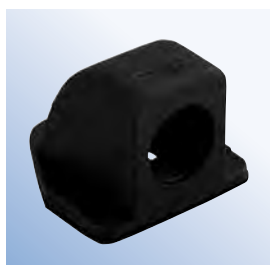
Art.-Nr.	G	A mm	B mm	C mm	D mm	E mm	F mm	H mm	
5500.40.17	M16x1.5	49	47	35	22	27	29	37	10
5500.40.20	M20x1.5	49	47	35	22	27	29	37	10
5500.40.25	M25x1.5	69	65	44	30	31	42	52	10
5500.40.32	M32x1.5	90	78	55	40	65	65	65	10
5500.40.40	M40x1.5	100	94	66	48	68	80	80	5
5500.40.50	M50x1.5	116	101	76	63	85	88	88	5



**Anschlussgewinde Pg
Grau**

**Entry thread Pg
Grey**

Art.-Nr.	G	A mm	B mm	C mm	D mm	E mm	F mm	H mm	
5520.11	Pg 11	49	47	35	22	27	29	37	10
5520.16	Pg 16	49	47	35	22	27	29	37	10
5520.21	Pg 21	69	65	44	30	31	42	52	10
5520.29	Pg 29	90	78	55	40	65	65	65	10
5520.36	Pg 36	100	94	66	48	68	80	80	5
5520.48.48	Pg 48	116	101	76	63	85	88	88	5



**Anschlussgewinde Pg
Schwarz**

**Entry thread Pg
Black**

Art.-Nr.	G	A mm	B mm	C mm	D mm	E mm	F mm	H mm	
5540.11	Pg 11	49	47	35	22	27	29	37	10
5540.16	Pg 16	49	47	35	22	27	29	37	10
5540.21	Pg 21	69	65	44	30	31	42	52	10
5540.29	Pg 29	90	78	55	40	65	65	65	10
5540.36	Pg 36	100	94	66	48	68	80	80	5
5540.48.48	Pg 48	116	101	76	63	85	88	88	5

