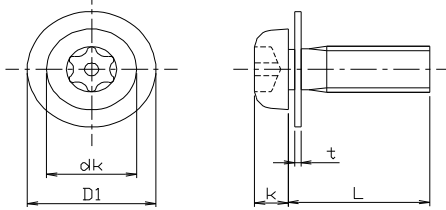
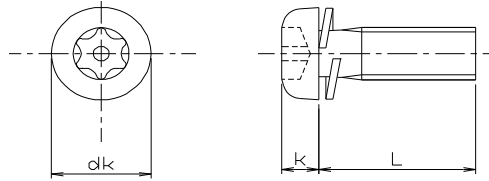


PIN-PAN 6-LOBE MACHINE SCREW
assembled with flat washer
stainless A2



PIN-PAN 6-LOBE MACHINE SCREW
assembled with spring washer
stainless A2



	M3	M4
dk	5.5	7
k	2	2.6
D1	8	10
t	0.5	0.8
drive #	T10	T20

Please order this product by part number. USD/100pcs

SIZE	PART #	box q'ty	1-9 boxes	10 & above boxes
M3x6	R830-TX210306	2,000	\$8.20	call us
8	R830-TX210308	2,000	\$8.30	call us
10	R830-TX210310	1,000	\$8.40	call us
M4x8	R830-TX210408	1,000	\$12.10	call us
10	R830-TX210410	1,000	\$12.60	call us
12	R830-TX210412	500	\$13.10	call us

A tamper proof style screw that requires a 6-lobe hex key with hole for installation or removal

	M3	M4	M5
dk	5.5	7	9
k	2	2.6	3.3
drive #	T10	T20	T25

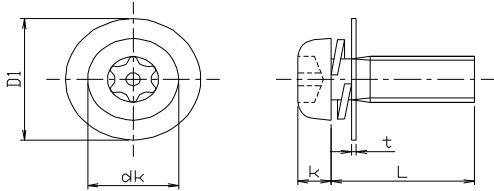
Please order this product by part number. USD/100pcs

SIZE	PART #	box q'ty	1-9 boxes	10 & above boxes
M3x6	R830-TX220306	2,000	\$7.20	call us
8	R830-TX220308	2,000	\$7.30	call us
10	R830-TX220310	2,000	\$7.50	call us
12	R830-TX220312	1,000	\$7.70	call us
M4x6	R830-TX220406	1,000	\$9.90	call us
8	R830-TX220408	1,000	\$10.40	call us
10	R830-TX220410	1,000	\$10.90	call us
12	R830-TX220412	1,000	\$11.40	call us
15	R830-TX220415	1,000	\$12.30	call us
16	R830-TX220416	500	\$12.60	call us
M5x8	R830-TX220508	500	\$17.50	call us
10	R830-TX220510	500	\$18.20	call us
12	R830-TX220512	500	\$19.20	call us
16	R830-TX220516	500	\$20.90	call us

MARYLAND METRICS
 phones: (410)358-3130 (800)638-1830 faxes: (410)358-3142 (800)872-9329
 URL: <http://mdmetric.com> E-mail: techinfo@mdmetric.com
 P.O.Box 261 Owings Mills, MD 21117 USA
FASTENER CATALOG - CHAPTER S

Many items in chapter S are not stocked in the US. Please allow adequate lead time for delivery and factory minimum order requirements.

PIN-PAN 6-LOBE MACHINE SCREW
assembled with flat & spring washer
stainless A2



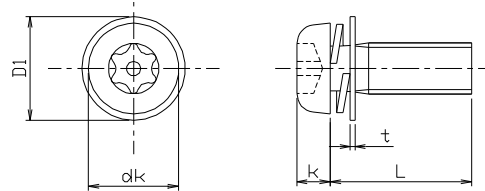
	M3	M4	M5
dk	5.5	7	9
k	2	2.6	3.3
D1	8	10	12
t	0.5	0.8	0.8
drive #	T10	T20	T25

Please order this product by part number.

USD/100pcs

SIZE	PART #	box q'ty	1-9 boxes	10 & above boxes
M3x6	R830-TX230306	2,000	\$9.60	call us
8	R830-TX230308	2,000	\$9.70	call us
10	R830-TX230310	1,000	\$9.80	call us
12	R830-TX230312	1,000	\$10.10	call us
M4x6	R830-TX230406	1,000	\$13.60	call us
8	R830-TX230408	1,000	\$14.20	call us
10	R830-TX230410	1,000	\$14.70	call us
12	R830-TX230412	500	\$15.10	call us
15	R830-TX230415	500	\$16.00	call us
16	R830-TX230416	500	\$16.30	call us
18	R830-TX230418	500	\$17.50	call us
20	R830-TX230420	500	\$17.50	call us
25	R830-TX230425	500	\$20.30	call us
30	R830-TX230430	200	\$22.40	call us
M5x8	R830-TX230508	500	\$22.10	call us
10	R830-TX230510	500	\$22.90	call us
12	R830-TX230512	500	\$23.70	call us
15	R830-TX230515	500	\$25.40	call us
16	R830-TX230516	500	\$25.50	call us
20	R830-TX230520	200	\$28.20	call us

PIN-PAN 6-LOBE MACHINE SCREW
assembled with small flat & spring washer
stainless A2



	M3	M4	M5
dk	5.5	7	9
k	2	2.6	3.3
D1	6	8	10
t	0.5	0.5	0.8
drive #	T10	T20	T25

Please order this product by part number.

USD/100pcs

SIZE	PART #	box q'ty	1-9 boxes	10 & above boxes
M3x6	R830-TX240306	2,000	\$9.60	call us
8	R830-TX240308	2,000	\$9.70	call us
10	R830-TX240310	2,000	\$9.80	call us
M4x8	R830-TX240408	1,000	\$14.20	call us
10	R830-TX240410	1,000	\$14.70	call us
12	R830-TX240412	1,000	\$15.10	call us
15	R830-TX240415	1,000	\$16.00	call us
16	R830-TX240416	500	\$16.30	call us
M6x20	R830-TX240620	200	\$41.40	call us

A tamper proof style screw that requires a
 6-lobe hex key with hole for installation or removal

MARYLAND METRICS
 phones: (410)358-3130 (800)638-1830 faxes: (410)358-3142 (800)872-9329
 URL: <http://mdmetric.com> E-mail: techinfo@mdmetric.com
 P.O.Box 261 Owings Mills, MD 21117 USA
FASTENER CATALOG - CHAPTER S

Many items in chapter S are not stocked in the US. Please allow adequate lead time for delivery and factory minimum order requirements.