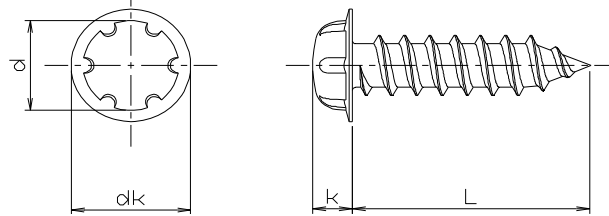


Due to present currency values the original 2002 prices shown in this chapter need to be multiplied by 1.5

## SYSTEM 6 TAPPING SCREW, TYPE A

Please order this product by part number.

	3	4
dk	4.5	6
k	2.02	2.5
drive #	SS3	SS4



### steel hardened zinc plated

USD/100pcs

SIZE	PART #	box q'ty	1-9 boxes	10 & above boxes
3x6	R830-SS020306ZP	2,000	\$2.00	call us
8	R830-SS020308ZP	2,000	\$2.00	call us
10	R830-SS020310ZP	2,000	\$2.20	call us
12	R830-SS020312ZP	2,000	\$2.30	call us
16	R830-SS020316ZP	2,000	\$2.70	call us
4x8	R830-SS020408ZP	1,000	\$2.60	call us
10	R830-SS020410ZP	1,000	\$2.80	call us
12	R830-SS020412ZP	1,000	\$3.00	call us
20	R830-SS020420ZP	1,000	\$3.80	call us

### steel hardened zinc yellow

USD/100pcs

SIZE	PART #	box q'ty	1-9 boxes	10 & above boxes
3x6	R830-SS020306ZY	2,000	\$2.00	call us
8	R830-SS020308ZY	2,000	\$2.00	call us
10	R830-SS020310ZY	2,000	\$2.20	call us
12	R830-SS020312ZY	2,000	\$2.30	call us
16	R830-SS020316ZY	2,000	\$2.70	call us
4x8	R830-SS020408ZY	1,000	\$2.60	call us
10	R830-SS020410ZY	1,000	\$2.80	call us
12	R830-SS020412ZY	1,000	\$3.00	call us
20	R830-SS020420ZY	1,000	\$3.80	call us

### steel hardened Nickle plated

USD/100pcs

SIZE	PART #	box q'ty	1-9 boxes	10 & above boxes
3x6	R830-SS020306Ni	2,000	\$2.50	call us
8	R830-SS020308Ni	2,000	\$2.50	call us
10	R830-SS020310Ni	2,000	\$2.60	call us
12	R830-SS020312Ni	2,000	\$3.10	call us
16	R830-SS020316Ni	2,000	\$3.60	call us
4x8	R830-SS020408Ni	1,000	\$3.50	call us
10	R830-SS020410Ni	1,000	\$3.70	call us
12	R830-SS020412Ni	1,000	\$4.20	call us
20	R830-SS020420Ni	1,000	\$5.00	call us

### steel hardened zinc black

USD/100pcs

SIZE	PART #	box q'ty	1-9 boxes	10 & above boxes
3x6	R830-SS020306ZB	2,000	\$2.40	call us
8	R830-SS020308ZB	2,000	\$2.50	call us
10	R830-SS020310ZB	2,000	\$2.70	call us
12	R830-SS020312ZB	2,000	\$2.90	call us
16	R830-SS020316ZB	2,000	\$3.40	call us
4x8	R830-SS020408ZB	1,000	\$3.40	call us
10	R830-SS020410ZB	1,000	\$3.70	call us
12	R830-SS020412ZB	1,000	\$4.10	call us
20	R830-SS020420ZB	1,000	\$5.40	call us

### steel hardened Chrome plated

USD/100pcs

SIZE	PART #	box q'ty	1-9 boxes	10 & above boxes
3x6	R830-SS020306Cr	2,000	\$2.90	call us
8	R830-SS020308Cr	2,000	\$2.90	call us
10	R830-SS020310Cr	2,000	\$3.10	call us
12	R830-SS020312Cr	2,000	\$3.50	call us
16	R830-SS020316Cr	2,000	\$3.90	call us
4x8	R830-SS020408Cr	1,000	\$4.00	call us
10	R830-SS020410Cr	1,000	\$4.20	call us
12	R830-SS020412Cr	1,000	\$4.70	call us
20	R830-SS020420Cr	1,000	\$5.50	call us

## MARYLAND METRICS

phones: (410)358-3130 (800)638-1830 faxes: (410)358-3142 (800)872-9329

URL: <http://mdmetric.com> E-mail: [techinfo@mdmetric.com](mailto:techinfo@mdmetric.com)

P.O.Box 261 Owings Mills, MD 21117 USA

**FASTENER CATALOG - CHAPTER S**

Many items in chapter S are not stocked in the US. Please allow adequate lead time for delivery and factory minimum order requirements.

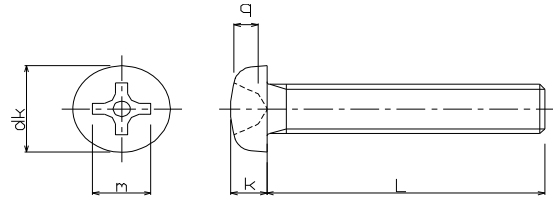
copyright 2002 maryland metrics

Due to present currency values the original 2002 prices shown in this chapter need to be multiplied by 1.5



**PIN-PAN HEAD PHILLIPS MACHINE SCREWS**  
**steel hardened eco-zinc plating (NO Cr6)**

	M3	M4	M5	M6
dk	5.5	7	9	10.5
k	2	2.6	3.3	3.9
drive #	2	2	2	3



SIZE	PART #	box q'ty	USD/100pcs	
			100pcs	1,000pcs & above
M3x6	R830-PH010306	100	\$4.60	\$3.60
8	R830-PH010308	100	\$4.70	\$3.70
10	R830-PH010310	100	\$4.70	\$3.70
M4x6	R830-PH010406	100	\$5.60	\$4.40
10	R830-PH010410	100	\$6.00	\$4.70
16	R830-PH010416	100	\$6.40	\$5.10
M5x10	R830-PH010510	100	\$10.70	\$8.60
16	R830-PH010516	100	\$11.70	\$9.30
20	R830-PH010520	100	\$12.10	\$9.70
M6x10	R830-PH010610	100	\$16.30	\$13.00
16	R830-PH010616	100	\$17.60	\$14.00
20	R830-PH010620	100	\$18.40	\$14.70

**MARYLAND METRICS**  
 phones: (410)358-3130 (800)638-1830 faxes: (410)358-3142 (800)872-9329  
 URL: <http://mdmetric.com> E-mail: [techinfo@mdmetric.com](mailto:techinfo@mdmetric.com)  
 P.O.Box 261 Owings Mills, MD 21117 USA

---

**FASTENER CATALOG - CHAPTER S**

Many items in chapter S are not stocked in the US. Please allow adequate lead time for delivery and factory minimum order requirements.

copyright 2002, 2006 maryland metrics