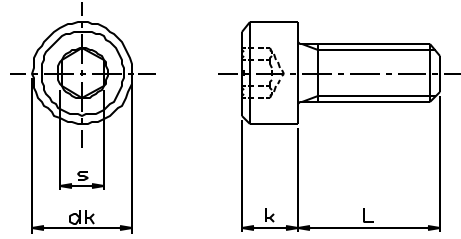


Due to present currency values the original 2002 prices shown in this chapter need to be multiplied by 1.5



HEX SOCKET CAP SCREW
12.9 plain FINE THREAD
ISO 4762 / JIS B1176 / DIN 912



	M10	M12	M14	M16	M20
dk	16	18	21	24	30
k	10	12	14	16	20
s	8	10	12	14	17

Please order this product by series number R830-DIN 912-12-DIAMETER X PITCH X LENGTH

Example: R830-DIN 912-12-M12X1.25X30

USD/100pcs

	M10		M12		M14		M16		M20	
Pitch	1.25		1.25		1.5		1.5		1.5	
L	unit price	box q'ty	unit price	box q'ty	unit price	box q'ty	unit price	box q'ty	unit price	box q'ty
15	\$30.00	100								
20	\$30.00	100	\$48.00	100	\$117.00	60				
25	\$30.00	100	\$51.00	80	\$117.00	60	\$117.00	40		
30	\$33.00	100	\$51.00	80	\$117.00	50	\$126.00	40		
35	\$39.00	100	\$54.00	70	\$114.00	50	\$132.00	35		
40	\$42.00	100	\$63.00	70	\$120.00	40	\$138.00	35	\$492.00	20
45	\$45.00	80	\$66.00	60	\$129.00	40	\$147.00	30	\$501.00	15
50	\$51.00	80	\$72.00	60	\$135.00	40	\$150.00	30	\$510.00	15
55	\$54.00	70	\$78.00	50	\$150.00	35	\$174.00	25	\$537.00	15
60	\$60.00	70	\$87.00	50	\$165.00	35	\$183.00	25	\$564.00	15
65	\$72.00	60	\$96.00	40	\$171.00	30	\$192.00	25	\$591.00	15
70	\$78.00	60	\$102.00	40	\$177.00	30	\$210.00	20	\$615.00	12
75	\$87.00	60	\$105.00	40	\$192.00	30	\$216.00	20	\$648.00	12
80	\$93.00	50	\$117.00	40	\$201.00	25	\$231.00	20	\$678.00	12
85	\$102.00	50	\$132.00	35	\$213.00	25	\$255.00	15	\$756.00	10
90	\$105.00	50	\$132.00	35	\$213.00	25	\$255.00	15	\$756.00	10
100	\$114.00	40	\$147.00	30	\$234.00	20	\$276.00	15	\$834.00	10

MARYLAND METRICS

phones: (410)358-3130 (800)638-1830 faxes: (410)358-3142 (800)872-9329

URL: <http://mdmetric.com> E-mail: techinfo@mdmetric.com

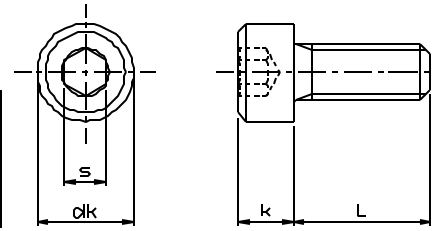
P.O.Box 261 Owings Mills, MD 21117 USA

FASTENER CATALOG - CHAPTER S2

Many items in this chapter are not stocked in the US. Please allow adequate lead time for delivery and factory minimum order requirements.

Due to present currency values the original 2002 prices shown in this chapter need to be multiplied by 1.5

HEX SOCKET CAP SCREW
stainless steel A2 FINE THREAD
ISO 4762 / JIS B1176 / DIN 912



	M6	M8	M10	M12	M14	M16	M18	M20
dk	10	13	16	18	21	24	27	30
k	6	8	10	12	14	16	18	20
s	5	6	8	10	12	14	14	17

Please order this product by series number R830-DIN 912A2-DIAMETER X PITCH X LENGTH

Example: R830-DIN 912A2-M10X1.25X30

USD/100pcs

	M6		M8		M10				M12	
Pitch	0.75		1.0		1.0		1.25		1.25	
box q'ty	1		1		1		1		1	
L	1-49 pcs	50 & above	1-49 pcs	50 & above	1-29 pcs	30 & above	1-29 pcs	30 & above	1-29 pcs	30 & above
10	\$210.00	\$158.00								
12	\$210.00	\$158.00	\$175.00	\$123.00						
15	\$210.00	\$158.00	\$175.00	\$123.00	\$280.00	\$210.00	\$210.00	\$158.00		
16			\$175.00	\$123.00			\$210.00	\$158.00		
20	\$210.00	\$158.00	\$175.00	\$123.00	\$280.00	\$210.00	\$210.00	\$158.00	\$298.00	\$228.00
25	\$210.00	\$158.00	\$175.00	\$123.00	\$280.00	\$210.00	\$210.00	\$158.00	\$298.00	\$228.00
30	\$245.00	\$175.00	\$193.00	\$140.00	\$280.00	\$228.00	\$245.00	\$175.00	\$315.00	\$245.00
35			\$193.00	\$140.00	\$315.00	\$245.00	\$263.00	\$193.00	\$350.00	\$263.00
40			\$210.00	\$158.00	\$333.00	\$263.00	\$280.00	\$210.00	\$385.00	\$280.00
45			\$245.00	\$175.00	\$350.00	\$280.00	\$298.00	\$228.00	\$420.00	\$315.00
50			\$245.00	\$175.00	\$385.00	\$315.00	\$315.00	\$245.00	\$455.00	\$350.00
55							\$455.00	\$350.00	\$735.00	\$630.00
60							\$455.00	\$350.00	\$735.00	\$630.00
65							\$525.00	\$420.00	\$805.00	\$700.00
70							\$525.00	\$420.00	\$805.00	\$700.00
75							\$560.00	\$455.00	\$875.00	\$770.00
80							\$595.00	\$490.00	\$945.00	\$840.00
90							\$630.00	\$525.00	\$1,015.00	\$910.00
100							\$700.00	\$595.00	\$1,085.00	\$980.00

USD/100pcs

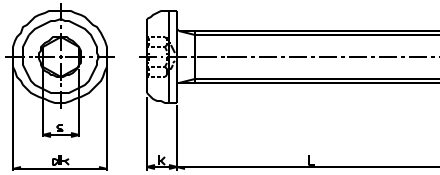
	M14		M16	
Pitch	1.5		1.5	
box q'ty	1		1	
L	1-19pcs	20 & above	1-19pcs	20 & above
30	\$1,925.00	\$1,750.00	\$1,925.00	\$1,750.00
35	\$1,960.00	\$1,785.00	\$1,960.00	\$1,785.00
40	\$1,995.00	\$1,820.00	\$1,995.00	\$1,820.00
45	\$2,065.00	\$1,890.00	\$2,065.00	\$1,890.00
50	\$2,100.00	\$1,925.00	\$2,100.00	\$1,925.00
55				
60	\$2,205.00	\$2,030.00	\$2,205.00	\$2,030.00
65				
70	\$2,275.00	\$2,100.00	\$2,275.00	\$2,100.00
75				
80	\$2,450.00	\$2,275.00	\$2,450.00	\$2,275.00
90				
100	\$2,625.00	\$2,450.00	\$2,625.00	\$2,450.00

USD/100pcs

	M18		M20	
Pitch	1.5		1.5	
box q'ty	1		1	
L	1-49pcs	50 & above	1-49pcs	50 & above
40	\$2,450.00	\$2,275.00	\$2,450.00	\$2,275.00
50	\$2,625.00	\$2,380.00	\$2,625.00	\$2,380.00
60	\$2,800.00	\$2,520.00	\$2,800.00	\$2,520.00
70	\$3,045.00	\$2,695.00	\$3,045.00	\$2,695.00
80	\$3,150.00	\$2,800.00	\$3,150.00	\$2,800.00
100	\$3,325.00	\$2,975.00	\$3,325.00	\$2,975.00

HEX SOCKET BUTTON HEAD CAP SCREW

10.9 FINE THREAD SSS 003 (~ISO7380)



	M10	M12
dk	18	21
k	6	7
s	6	8

Please order this product by series number R830-ISO 7380-DIAMETER X PITCH X LENGTH

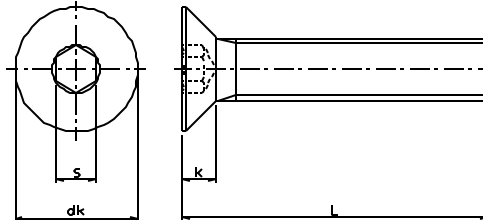
Example: R830-ISO 7380-M10X1.25X30

USD/100pcs

	M10				M12			
Pitch	1.25				1.25			
	10.9 plain		10.9 zinc plated		10.9 plain		10.9 zinc plated	
L	unit price	box q'ty	unit price	box q'ty	unit price	box q'ty	unit price	box q'ty
15	\$48.30	100		100				
16	\$48.30	100		100				
20	\$48.30	10		10	\$81.70	50		50
25	\$54.10	100		100	\$81.70	50		50
30	\$61.00	100		100	\$90.90	50		50
35	\$66.70	100		100	\$100.10	50		50
40	\$72.50	50		50	\$109.30	50		50
45	\$78.20	50		50	\$120.80	50		50
50	\$85.10	50		50	\$135.70	50		50
60	\$96.60	50		50	\$181.70	25		25

HEX SOCKET FLAT HEAD CAP SCREW

10.9 plain FINE THREAD DIN 7991



	M10	M12	M16
dk	20	24	30
k	6	7	8
s	6	8	10

Please order this product by series number R830-DIN 7991-10-DIAMETER X PITCH X LENGTH

Example: R830-DIN 7991-10-M10X1.25X30

USD/100pcs

	M10		M12		M16	
Pitch	1.25		1.25		1.5	
L	unit price	box q'ty	unit price	box q'ty	unit price	box q'ty
15	\$48.30	200				
16	\$48.30	200				
20	\$48.30	200	\$81.70	100		
25	\$54.10	100	\$81.70	100	\$226.60	50
30	\$61.00	100	\$90.90	100	\$226.60	50
35	\$66.70	100	\$100.10	80	\$226.60	50
40	\$72.50	100	\$109.30	80	\$242.70	50
45			\$120.80	60	\$257.60	40
50			\$135.70	60	\$272.60	40
55					\$287.50	30
60					\$302.50	30

MARYLAND METRICS

phones: (410)358-3130 (800)638-1830 faxes: (410)358-3142 (800)872-9329

URL: <http://mdmetric.com> E-mail: techinfo@mdmetric.com

P.O.Box 261 Owings Mills, MD 21117 USA

FASTENER CATALOG - CHAPTER S2

Many items in this chapter are not stocked in the US. Please allow adequate lead time for delivery and factory minimum order requirements.