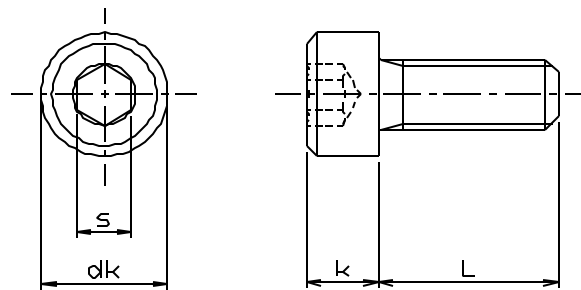


**MARYLAND METRICS**  
 phones: (410)358-3130 (800)638-1830 faxes: (410)358-3142 (800)872-9329  
 URL: <http://mdmetric.com> E-mail: [techinfo@mdmetric.com](mailto:techinfo@mdmetric.com)  
 P.O.Box 261 Owings Mills, MD 21117 USA  
**FASTENER CATALOG - CHAPTER S4**

Many items in this chapter are not stocked in the US. Please allow adequate lead time for delivery and factory minimum order requirements.



**SUS 316L, (stainless steel A4)  
 HEX SOCKET CAP SCREW  
 ISO 4762 / JIS B1176 / DIN 912**

Please order this product by series number R830-DIN 912-316L-DIAMETER X LENGTH  
 Example: R830-DIN 912-316L-M4x10 USD/100pcs

	M3		M4		M5	
dk	5.5		7		8.5	
k	3		4		5	
s	2.5		3		4	
box q'ty	1		1		1	
L	1-49pcs	50 & above	1-49pcs	50 & above	1-49pcs	50 & above
5	77	35				
6	77	35	77	35	88	42
8	77	35	77	35	88	42
10	77	35	77	35	88	42
12	77	35	77	35	88	42
14	98	53	98	53	105	53
15	98	53	98	53	105	53
16	98	53	98	53	105	53
18	105	53	105	53	123	70
20	105	53	105	53	123	70
25	140	88	140	88	140	77
30	158	105	158	105	158	105
35			193	140	193	140
40			210	158	210	158
45			228	175	228	175
50			245	193	245	193
55					298	228
60					298	228

USD/100pcs

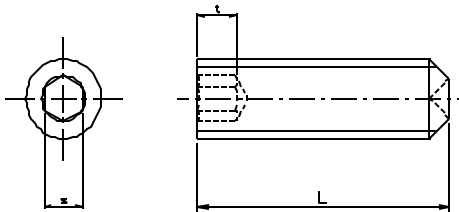
	M6		M8		M10		M12		M14	
dk	10		13		16		18		21	
k	6		8		10		12		14	
s	5		6		8		10		12	
box q'ty	1		1		1		1		1	
L	1-49pcs	50 & above	1-49pcs	50 & above	1-29pcs	30 & above	1-19pcs	20 & above	1-9pcs	10 & above
8	105.00	63.00								
10	105.00	63.00	158.00	105.00						
12	105.00	63.00	158.00	105.00						
14	123.00	70.00	158.00	105.00						
15	123.00	70.00	158.00	105.00	245.00	193.00	350.00	298.00		
16	123.00	70.00	158.00	105.00	245.00	193.00	350.00	298.00		
18	140.00	77.00	158.00	105.00						
20	140.00	77.00	158.00	105.00	245.00	193.00	315.00	263.00		
25	140.00	88.00	175.00	123.00	245.00	193.00	315.00	263.00	1,400.00	1,330.00
30	158.00	105.00	193.00	140.00	263.00	210.00	350.00	298.00	1,400.00	1,330.00
35	193.00	140.00	228.00	175.00	280.00	228.00	368.00	315.00	1,400.00	1,330.00
40	210.00	158.00	298.00	228.00	315.00	263.00	385.00	333.00	1,400.00	1,330.00
45	228.00	175.00	315.00	245.00	333.00	280.00	438.00	368.00	1,400.00	1,330.00
50	245.00	193.00	350.00	263.00	350.00	298.00	473.00	403.00	1,435.00	1,365.00
55	298.00	228.00	385.00	298.00	525.00	438.00	595.00	543.00		
60	298.00	228.00	385.00	298.00	525.00	438.00	595.00	543.00	1,575.00	1,470.00
65	385.00	298.00	420.00	333.00	560.00	473.00	648.00	560.00		

**SUS 316L, (stainless steel A4) HEX SOCKET CAP SCREW ISO 4762 / JIS B1176 / DIN 912 Continuation**

	M6		M8		M10		M12		M14	
dk	10		13		16		18		21	
k	6		8		10		12		14	
s	5		6		8		10		12	
box q'ty	1		1		1		1		1	
L	1-49pcs	50 & above	1-49pcs	50 & above	1-29pcs	30 & above	1-19pcs	20 & above	1-9pcs	10 & above
70	385.00	298.00	420.00	333.00	560.00	473.00	665.00	525.00		
75			525.00	420.00	735.00	595.00	788.00	630.00		
80			525.00	420.00	735.00	595.00	788.00	630.00		
85			630.00	525.00			910.00	735.00		
90			700.00	560.00	840.00	700.00	910.00	735.00		
95			770.00	595.00						
100					910.00	735.00	980.00	805.00		
110					2,450.00	2,170.00	1,225.00	1,050.00		
120					2,555.00	2,275.00	1,400.00	1,225.00		
130					2,625.00	2,345.00	2,800.00	2,450.00		
140					2,975.00	2,695.00	3,150.00	2,800.00		
150					2,975.00	2,695.00	3,150.00	2,800.00		

**SUS 316L, (stainless steel A4) HEX SOCKET SET SCREW CUP POINT ISO 4029 / JIS B1177 / DIN 916**

	M3	M4	M5	M6	M8	M10	M12
s	1.5	2	3	3	4	5	6
t	2	3	3	4	5	6	8



Please order this product by series number R830-DIN 916-316L-DIAMETER X LENGTH

Example: R830-DIN 916-316L-M4x10

USD/100pcs

	M3		M4		M5		M6		M8		M10		M12	
box q'ty	1		1		1		1		1		1		1	
L	1-49pcs	50 & above	1-49pcs	50 & above	1-49pcs	50 & above	1-49pcs	50 & above	1-49pcs	50 & above	1-49pcs	50 & above	1-49pcs	50 & above
3	\$39.00	\$28.00												
4	\$39.00	\$28.00	\$42.00	\$32.00										
5	\$39.00	\$28.00	\$42.00	\$32.00	\$46.00	\$32.00								
6	\$39.00	\$28.00	\$42.00	\$32.00	\$46.00	\$32.00	\$49.00	\$39.00						
8	\$42.00	\$32.00	\$46.00	\$35.00	\$46.00	\$35.00	\$49.00	\$39.00	\$81.00	\$63.00				
10	\$46.00	\$35.00	\$49.00	\$39.00	\$49.00	\$39.00	\$53.00	\$42.00	\$81.00	\$63.00	\$123.00	\$88.00		
12	\$53.00	\$42.00	\$60.00	\$46.00	\$60.00	\$46.00	\$63.00	\$53.00	\$84.00	\$70.00	\$123.00	\$88.00	\$245.00	\$175.00
14	\$105.00	\$70.00	\$63.00	\$53.00	\$63.00	\$53.00	\$70.00	\$56.00	\$95.00	\$77.00				
15	\$105.00	\$70.00	\$63.00	\$53.00	\$63.00	\$53.00	\$70.00	\$56.00	\$95.00	\$77.00	\$140.00	\$98.00	\$245.00	\$175.00
16	\$123.00	\$88.00	\$70.00	\$56.00	\$70.00	\$60.00	\$81.00	\$63.00	\$102.00	\$81.00	\$158.00	\$109.00	\$245.00	\$175.00
18	\$140.00	\$105.00	\$81.00	\$63.00	\$81.00	\$63.00	\$84.00	\$70.00	\$105.00	\$84.00	\$158.00	\$116.00	\$245.00	\$175.00
20	\$140.00	\$105.00	\$81.00	\$63.00	\$81.00	\$63.00	\$84.00	\$70.00	\$105.00	\$84.00	\$158.00	\$116.00	\$245.00	\$175.00
25			\$123.00	\$88.00	\$123.00	\$88.00	\$95.00	\$77.00	\$133.00	\$105.00	\$175.00	\$133.00	\$263.00	\$193.00
30			\$140.00	\$98.00	\$140.00	\$98.00	\$140.00	\$98.00	\$158.00	\$126.00	\$193.00	\$151.00	\$280.00	\$210.00
35					\$193.00	\$158.00	\$193.00	\$158.00	\$210.00	\$175.00	\$280.00	\$193.00	\$333.00	\$263.00
40					\$210.00	\$175.00	\$210.00	\$175.00	\$228.00	\$193.00	\$298.00	\$210.00	\$385.00	\$315.00
45							\$263.00	\$210.00	\$280.00	\$228.00	\$350.00	\$263.00	\$490.00	\$350.00
50							\$280.00	\$228.00	\$298.00	\$245.00	\$385.00	\$280.00		
60											\$700.00	\$560.00	\$945.00	\$770.00

**MARYLAND METRICS**

phones: (410)358-3130 (800)638-1830 faxes: (410)358-3142 (800)872-9329

URL: <http://mdmetric.com> E-mail: [techinfo@mdmetric.com](mailto:techinfo@mdmetric.com)

P.O.Box 261 Owings Mills, MD 21117 USA

**FASTENER CATALOG - CHAPTER S4**

Many items in this chapter are not stocked in the US. Please allow adequate lead time for delivery and factory minimum order requirements.

**MARYLAND METRICS**  
 phones: (410)358-3130 (800)638-1830 faxes: (410)358-3142 (800)872-9329  
 URL: <http://mdmetric.com> E-mail: [techinfo@mdmetric.com](mailto:techinfo@mdmetric.com)  
 P.O.Box 261 Owings Mills, MD 21117 USA  
**FASTENER CATALOG - CHAPTER S4**

Many items in this chapter are not stocked in the US. Please allow adequate lead time for delivery and factory minimum order requirements.

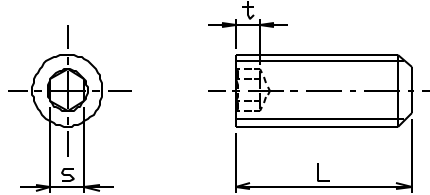
**SUS 316L, (stainless steel A4)  
 HEX SOCKET SET SCREW FLAT POINT  
 ISO 4026 / JIS B1177 / DIN 913**

	M18	M20	M24
s	8	10	12
t	10	12	15

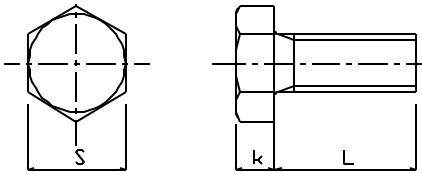
Please order this product by series number R830-DIN 913-316L-DIAMETER X LENGTH

Example: R830-DIN 913-316L-M16x20 USD/100pcs

	M16		M20		M24	
box q'ty	1		1		1	
L	1-49pcs	50 & above	1-49pcs	50 & above	1-49pcs	50 & above
16	\$840.00	\$665.00				
20	\$840.00	\$665.00	\$1,750.00	\$1,400.00		
25	\$875.00	\$700.00	\$1,820.00	\$1,470.00		
30	\$910.00	\$735.00	\$1,890.00	\$1,540.00		
35			\$1,960.00	\$1,610.00		
40	\$980.00	\$805.00			\$2,625.00	\$2,275.00
45	\$1,050.00	\$840.00				
50	\$1,120.00	\$875.00			\$2,695.00	\$2,345.00
60	\$1,225.00	\$980.00			\$2,800.00	\$2,450.00
70	\$1,400.00	\$1,155.00	\$2,625.00	\$2,275.00		
80	\$1,575.00	\$1,330.00			\$3,150.00	\$2,800.00
100	\$1,925.00	\$1,575.00	\$3,150.00	\$2,800.00	\$3,500.00	\$3,150.00



**SUS 316L, (stainless steel A4)  
 HEX HEAD CAP SCREW  
 JIS B1180 appendix**



Please order this product by series number R830-B1180-316L-DIAMETER X LENGTH

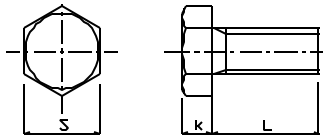
Example: R830-B1180-316L-M4x10 USD/100pcs

	M3		M4		M5		M6		M8		M10		M12	
s	5.5		7		8		10		13		17		19	
k	2		2.8		3.5		4		5.5		7		8	
box q'ty	1		1		1		1		1		1		1	
L	1-49pcs	50 & above	1-49pcs	50 & above	1-49pcs	50 & above	1-49pcs	50 & above	1-29pcs	30 & above	1-19pcs	20 & above	1-19pcs	20 & above
6	\$28.00	\$21.00	\$21.00	\$18.00										
8	\$28.00	\$21.00	\$21.00	\$18.00	\$21.00	\$18.00								
10	\$28.00	\$21.00	\$25.00	\$19.00	\$25.00	\$19.00	\$32.00	\$21.00	\$70.00	\$60.00				
12	\$32.00	\$25.00	\$28.00	\$21.00	\$28.00	\$21.00	\$32.00	\$23.00	\$63.00	\$49.00				
14			\$32.00	\$23.00	\$32.00	\$23.00	\$35.00	\$26.00	\$67.00	\$53.00				
15	\$32.00	\$25.00	\$32.00	\$23.00	\$32.00	\$23.00	\$35.00	\$26.00	\$67.00	\$53.00	\$95.00	\$77.00		
16	\$32.00	\$25.00	\$32.00	\$23.00	\$32.00	\$23.00	\$35.00	\$26.00	\$67.00	\$53.00	\$81.00	\$63.00	\$151.00	\$133.00
18			\$35.00	\$28.00	\$35.00	\$28.00	\$39.00	\$28.00	\$70.00	\$56.00				
20	\$42.00	\$32.00	\$35.00	\$25.00	\$35.00	\$25.00	\$39.00	\$28.00	\$70.00	\$56.00	\$81.00	\$63.00	\$112.00	\$95.00
22			\$39.00	\$32.00	\$39.00	\$32.00	\$42.00	\$32.00	\$77.00	\$63.00				
25			\$39.00	\$30.00	\$39.00	\$30.00	\$42.00	\$32.00	\$77.00	\$63.00	\$84.00	\$67.00	\$112.00	\$95.00
30			\$42.00	\$33.00	\$42.00	\$33.00	\$49.00	\$35.00	\$84.00	\$70.00	\$88.00	\$74.00	\$123.00	\$105.00
35			\$46.00	\$35.00	\$46.00	\$35.00	\$53.00	\$39.00	\$91.00	\$77.00	\$102.00	\$84.00	\$133.00	\$116.00
40			\$49.00	\$39.00	\$49.00	\$39.00	\$56.00	\$42.00	\$95.00	\$81.00	\$109.00	\$91.00	\$144.00	\$126.00

**SUS 316L, (stainless steel A4)      HEX HEAD CAP SCREW      JIS B1180 appendix - Continuation**

	M3		M4		M5		M6		M8		M10		M12	
s	5.5		7		8		10		13		17		19	
k	2		2.8		3.5		4		5.5		7		8	
box q'ty	1		1		1		1		1		1		1	
L	1-49pcs	50 & above	1-49pcs	50 & above	1-49pcs	50 & above	1-49pcs	50 & above	1-29pcs	30 & above	1-19pcs	20 & above	1-19pcs	20 & above
45					\$56.00	\$42.00	\$60.00	\$46.00	\$105.00	\$88.00	\$119.00	\$102.00	\$154.00	\$137.00
50					\$60.00	\$46.00	\$63.00	\$49.00	\$112.00	\$95.00	\$130.00	\$123.00	\$179.00	\$154.00
55							\$88.00	\$74.00	\$140.00	\$123.00	\$151.00	\$133.00	\$210.00	\$175.00
60							\$98.00	\$81.00	\$158.00	\$140.00	\$175.00	\$151.00	\$228.00	\$193.00
65							\$109.00	\$91.00	\$175.00	\$158.00	\$193.00	\$161.00	\$245.00	\$210.00
70							\$130.00	\$112.00	\$186.00	\$168.00	\$217.00	\$182.00	\$263.00	\$228.00
75							\$137.00	\$119.00	\$210.00	\$175.00	\$235.00	\$200.00	\$280.00	\$245.00
80							\$175.00	\$140.00	\$263.00	\$228.00	\$252.00	\$217.00	\$298.00	\$263.00
85							\$193.00	\$158.00	\$280.00	\$245.00	\$280.00	\$245.00	\$315.00	\$280.00
90							\$193.00	\$158.00	\$280.00	\$245.00	\$298.00	\$263.00	\$333.00	\$298.00
95							\$210.00	\$175.00	\$298.00	\$263.00	\$333.00	\$298.00	\$385.00	\$350.00
100							\$210.00	\$175.00	\$298.00	\$263.00	\$315.00	\$280.00	\$368.00	\$333.00
105											\$543.00	\$455.00	\$613.00	\$543.00
110									\$455.00	\$315.00	\$543.00	\$455.00	\$613.00	\$543.00
115											\$578.00	\$490.00	\$630.00	\$560.00
120									\$490.00	\$350.00	\$578.00	\$490.00	\$630.00	\$560.00
125											\$630.00	\$543.00	\$683.00	\$613.00
130									\$560.00	\$385.00	\$630.00	\$543.00	\$683.00	\$613.00
135											\$700.00	\$613.00	\$735.00	\$648.00
140									\$665.00	\$455.00	\$700.00	\$613.00	\$735.00	\$648.00
150									\$700.00	\$490.00	\$735.00	\$630.00	\$770.00	\$665.00
160											\$840.00	\$735.00	\$998.00	\$893.00
170											\$910.00	\$805.00	\$1,050.00	\$928.00
180											\$945.00	\$840.00	\$1,085.00	\$963.00
190											\$1,015.00	\$875.00	\$1,138.00	\$998.00
200											\$1,050.00	\$910.00	\$1,173.00	\$1,033.00

**SUS 316L, (stainless steel A4)  
HEX HEAD CAP SCREW  
JIS B1180 appendix**



Please order this product by series number R830-B1180-316L-DIAMETER X LENGTH

Example: R830-B1180-316L-M4x10

USD/100pcs

	M14		M16		M18		M20		M22		M24		M27	
s	22		24		27		30		32		36		41	
k	9		10		12		13		14		15		18	
box q'ty	1		1		1		1		1		1		1	
L	1-9pcs	10 & above	1-9pcs	10 & above	1-4pcs	5 & above	1-4pcs	5 & above	1-4pcs	5 & above	1-4pcs	5 & above	1-4pcs	5 & above
25	\$368.00	\$333.00	\$263.00	\$228.00										
30	\$368.00	\$333.00	\$263.00	\$228.00	\$823.00	\$753.00	\$630.00	\$543.00						
35	\$385.00	\$350.00	\$263.00	\$228.00	\$823.00	\$753.00	\$630.00	\$543.00						
40	\$403.00	\$368.00	\$280.00	\$245.00	\$823.00	\$753.00	\$630.00	\$543.00	\$1,068.00	\$945.00	\$1,330.00	\$1,190.00		
45	\$420.00	\$385.00	\$298.00	\$263.00	\$875.00	\$805.00	\$648.00	\$560.00	\$1,068.00	\$945.00	\$1,330.00	\$1,190.00		
50	\$438.00	\$403.00	\$333.00	\$298.00	\$910.00	\$840.00	\$700.00	\$613.00	\$998.00	\$893.00	\$1,225.00	\$1,085.00		
55	\$473.00	\$438.00	\$350.00	\$315.00	\$945.00	\$875.00	\$735.00	\$630.00	\$1,015.00	\$910.00	\$1,260.00	\$1,120.00		
60	\$508.00	\$473.00	\$368.00	\$333.00	\$980.00	\$910.00	\$770.00	\$665.00	\$1,033.00	\$928.00	\$1,295.00	\$1,155.00	\$3,500.00	\$3,150.00
65	\$578.00	\$525.00	\$385.00	\$350.00	\$1,015.00	\$945.00	\$840.00	\$718.00	\$1,103.00	\$998.00	\$1,365.00	\$1,225.00	\$3,500.00	\$3,150.00
70	\$613.00	\$560.00	\$420.00	\$385.00	\$1,033.00	\$963.00	\$875.00	\$735.00	\$1,155.00	\$1,033.00	\$1,470.00	\$1,295.00	\$3,500.00	\$3,150.00
75	\$648.00	\$595.00	\$455.00	\$420.00	\$1,085.00	\$998.00	\$945.00	\$788.00	\$1,190.00	\$1,068.00	\$1,575.00	\$1,400.00	\$3,675.00	\$3,325.00

**SUS 316L, (stainless steel A4) HEX HEAD CAP SCREW JIS B1180 appendix (Continuation)**

80	\$700.00	\$630.00	\$490.00	\$455.00	\$1,120.00	\$1,033.00	\$980.00	\$823.00	\$1,225.00	\$1,085.00	\$1,610.00	\$1,435.00	\$3,675.00	\$3,325.00
85	\$735.00	\$665.00	\$560.00	\$525.00	\$1,190.00	\$1,103.00	\$1,015.00	\$893.00	\$1,330.00	\$1,173.00	\$1,680.00	\$1,505.00	\$3,850.00	\$3,500.00
90	\$753.00	\$683.00	\$595.00	\$560.00	\$1,190.00	\$1,103.00	\$1,050.00	\$945.00	\$1,365.00	\$1,208.00	\$1,785.00	\$1,610.00	\$3,850.00	\$3,500.00
95	\$805.00	\$735.00	\$630.00	\$595.00	\$1,243.00	\$1,138.00	\$1,120.00	\$998.00	\$1,470.00	\$1,260.00	\$1,855.00	\$1,680.00	\$4,025.00	\$3,675.00
100	\$805.00	\$735.00	\$630.00	\$595.00	\$1,243.00	\$1,138.00	\$1,120.00	\$998.00	\$1,470.00	\$1,260.00	\$1,855.00	\$1,680.00	\$4,025.00	\$3,675.00
105			\$805.00	\$735.00			\$1,575.00	\$1,470.00	\$1,855.00	\$1,645.00	\$2,310.00	\$2,100.00	\$4,200.00	\$3,850.00
110	\$910.00	\$805.00	\$770.00	\$700.00	\$1,435.00	\$1,330.00	\$1,330.00	\$1,225.00	\$1,558.00	\$1,365.00	\$1,960.00	\$1,750.00	\$4,200.00	\$3,850.00
115			\$858.00	\$788.00			\$1,610.00	\$1,505.00	\$1,960.00	\$1,750.00	\$2,450.00	\$2,240.00	\$4,340.00	\$3,990.00
120	\$945.00	\$840.00	\$805.00	\$735.00	\$1,575.00	\$1,435.00	\$1,400.00	\$1,260.00	\$1,698.00	\$1,488.00	\$2,100.00	\$1,890.00	\$4,340.00	\$3,990.00
125			\$928.00	\$858.00			\$1,715.00	\$1,610.00	\$2,170.00	\$1,925.00	\$2,625.00	\$2,415.00	\$4,515.00	\$4,165.00
130	\$980.00	\$875.00	\$858.00	\$788.00	\$1,645.00	\$1,505.00	\$1,470.00	\$1,330.00	\$1,785.00	\$1,593.00	\$2,275.00	\$2,065.00	\$4,515.00	\$4,165.00
135			\$1,050.00	\$945.00			\$1,820.00	\$1,715.00	\$2,345.00	\$2,100.00	\$2,870.00	\$2,625.00		
140	\$1,085.00	\$945.00	\$928.00	\$858.00	\$1,750.00	\$1,610.00	\$1,575.00	\$1,435.00	\$1,925.00	\$1,733.00	\$2,450.00	\$2,240.00	\$4,655.00	\$4,305.00
150	\$1,155.00	\$1,015.00	\$963.00	\$893.00	\$1,925.00	\$1,750.00	\$1,645.00	\$1,488.00	\$1,995.00	\$1,803.00	\$2,555.00	\$2,345.00	\$4,900.00	\$4,480.00
160	\$1,610.00	\$1,435.00	\$1,278.00	\$1,103.00	\$2,100.00	\$1,925.00	\$1,890.00	\$1,733.00	\$2,625.00	\$2,415.00	\$3,500.00	\$3,150.00		
170	\$1,680.00	\$1,505.00	\$1,400.00	\$1,225.00	\$2,275.00	\$2,100.00	\$2,065.00	\$1,890.00	\$2,800.00	\$2,555.00	\$3,675.00	\$3,325.00		
180	\$1,750.00	\$1,575.00	\$1,435.00	\$1,260.00	\$2,450.00	\$2,240.00	\$2,240.00	\$2,065.00	\$2,905.00	\$2,660.00	\$3,850.00	\$3,500.00		
190			\$1,540.00	\$1,365.00			\$2,345.00	\$2,153.00	\$3,150.00	\$2,835.00	\$4,025.00	\$3,675.00		
200	\$1,925.00	\$1,750.00	\$1,610.00	\$1,435.00	\$2,608.00	\$2,398.00	\$2,415.00	\$2,223.00	\$3,325.00	\$3,010.00	\$4,200.00	\$3,850.00		
210			\$1,820.00	\$1,645.00										
220			\$1,855.00	\$1,680.00			\$2,835.00	\$2,625.00						
230			\$1,890.00	\$1,715.00			\$2,835.00	\$2,625.00						
250	\$2,240.00	\$2,065.00	\$1,960.00	\$1,785.00			\$2,870.00	\$2,660.00	\$4,200.00	\$3,850.00	\$5,075.00	\$4,655.00		
280			\$2,450.00	\$2,275.00			\$3,850.00	\$3,500.00						
300			\$2,625.00	\$2,415.00			\$4,200.00	\$3,850.00						

USD/100pcs

M30		
s	46	
k	19	
box q'ty	1	
L	1-4pcs	5 & above
60	\$3,150.00	\$3,500.00
65	\$3,150.00	\$3,500.00
70	\$3,150.00	\$3,500.00
75	\$3,325.00	\$3,675.00
80	\$3,325.00	\$3,675.00
85	\$3,500.00	\$3,850.00
90	\$3,500.00	\$3,850.00
95	\$3,675.00	\$4,025.00
100	\$3,675.00	\$4,025.00
105	\$3,850.00	\$4,200.00
110	\$3,850.00	\$4,200.00
115	\$3,990.00	\$4,340.00
120	\$3,990.00	\$4,340.00
125	\$4,165.00	\$4,515.00
130	\$4,165.00	\$4,515.00
135	\$4,305.00	\$4,655.00
140	\$4,305.00	\$4,655.00
150	\$4,480.00	\$4,900.00
160	\$5,460.00	\$5,950.00
170	\$5,810.00	\$6,300.00
180	\$5,985.00	\$6,475.00
190	\$6,160.00	\$6,825.00
200	\$6,300.00	\$7,000.00
250	\$8,295.00	\$9,100.00

**MARYLAND METRICS**  
 phones: (410)358-3130 (800)638-1830 faxes: (410)358-3142 (800)872-9329  
 URL: <http://mdmetric.com> E-mail: [techinfo@mdmetric.com](mailto:techinfo@mdmetric.com)  
 P.O.Box 261 Owings Mills, MD 21117 USA  
**FASTENER CATALOG - CHAPTER S4**

Many items in this chapter are not stocked in the US. Please allow adequate lead time for delivery and factory minimum order requirements.

Due to present currency values the original 2002 prices shown in this chapter need to be multiplied by 1.5

**SUS 316L, (stainless steel A4)  
PHILLIPS PAN HEAD MACHINE SCREW  
JIS B1111 appendix**

**MARYLAND METRICS**  
 phones: (410)358-3130 (800)638-1830 faxes: (410)358-3142 (800)872-9329  
 URL: <http://mdmetric.com> E-mail: [techinfo@mdmetric.com](mailto:techinfo@mdmetric.com)  
 P.O.Box 261 Owings Mills, MD 21117 USA  
**FASTENER CATALOG - CHAPTER S4**

Many items in this chapter are not stocked in the US. Please allow adequate lead time for delivery and factory minimum order requirements.

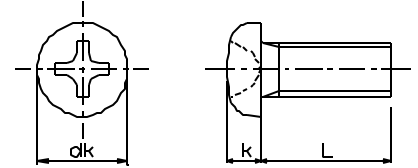
	M3	M4	M5	M6	M8
dk	5.5	7	9	10.5	14
k	2	2.6	3.3	3.9	5.2

Please order this product by series number R830-B1111-316L-DIAMETER X LENGTH

Example: R830-B1111-316L-M4x10

USD/100pcs

box q'ty	M3		M4		M5		M6		M8	
	1	1	1	1	1	1	1	1	1	1
L	1-99pcs	100 & above	1-99pcs	100 & above	1-99pcs	100 & above	1-49pcs	50 & above	1-49pcs	50 & above
5	\$21.00	\$12.00								
6	\$21.00	\$12.00	\$28.00	\$18.00						
8	\$21.00	\$12.00	\$28.00	\$18.00	\$39.00	\$28.00				
10	\$21.00	\$12.00	\$28.00	\$18.00	\$39.00	\$28.00	\$63.00	\$46.00		
12	\$21.00	\$14.00	\$28.00	\$18.00	\$42.00	\$32.00	\$63.00	\$46.00		
15	\$25.00	\$14.00	\$32.00	\$21.00	\$49.00	\$35.00	\$70.00	\$53.00	\$140.00	\$105.00
16	\$25.00	\$14.00	\$32.00	\$21.00	\$49.00	\$35.00	\$70.00	\$53.00	\$140.00	\$105.00
20	\$28.00	\$18.00	\$35.00	\$25.00	\$56.00	\$39.00	\$88.00	\$60.00	\$158.00	\$112.00
25	\$32.00	\$21.00	\$39.00	\$28.00	\$63.00	\$42.00	\$98.00	\$70.00	\$175.00	\$123.00
30	\$35.00	\$25.00	\$46.00	\$32.00	\$70.00	\$53.00	\$105.00	\$81.00	\$193.00	\$133.00
35			\$56.00	\$39.00	\$81.00	\$60.00	\$116.00	\$95.00	\$210.00	\$158.00
40	\$56.00	\$39.00	\$60.00	\$42.00	\$98.00	\$70.00	\$123.00	\$102.00	\$228.00	\$175.00
45			\$70.00	\$53.00	\$105.00	\$88.00	\$140.00	\$123.00	\$245.00	\$193.00
50			\$88.00	\$60.00	\$123.00	\$105.00	\$175.00	\$140.00	\$263.00	\$210.00
55			\$123.00	\$105.00	\$140.00	\$123.00	\$193.00	\$158.00	\$298.00	\$245.00
60			\$140.00	\$123.00	\$175.00	\$140.00	\$210.00	\$175.00	\$315.00	\$263.00
65			\$158.00	\$140.00	\$193.00	\$158.00	\$245.00	\$193.00	\$333.00	\$280.00
70					\$263.00	\$210.00	\$298.00	\$263.00	\$350.00	\$298.00
75					\$298.00	\$245.00	\$333.00	\$298.00	\$385.00	\$315.00
80							\$403.00	\$350.00	\$420.00	\$350.00
90							\$455.00	\$385.00	\$525.00	\$455.00
100							\$525.00	\$420.00	\$630.00	\$560.00

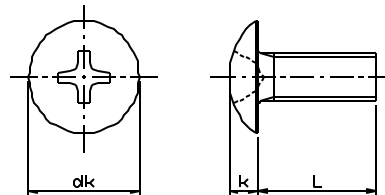


**SUS 316L, (stainless steel A4)  
PHILLIPS TRUSS HEAD MACHINE SCREW  
JIS B1111 appendix**

Please order this product by series number R830-B1111TRUSS-316L-DIAMETER X LENGTH

Example: R830-B1111TRUSS-316L-M4x10

box q'ty	M4		M5	
	1	1	1	1
L	1-99pcs	100 & above	1-99pcs	100 & above
6	\$42.00	\$28.00		
8	\$42.00	\$28.00	\$70.00	\$49.00
10	\$42.00	\$28.00	\$70.00	\$49.00
12	\$46.00	\$32.00	\$81.00	\$56.00
15	\$53.00	\$35.00	\$88.00	\$60.00
16	\$53.00	\$35.00	\$88.00	\$60.00
20	\$56.00	\$39.00	\$95.00	\$67.00
25	\$70.00	\$49.00	\$105.00	\$74.00



	M4	M5
dk	9.4	11.8
k	2.5	3.1

30	\$88.00	\$60.00	\$116.00	\$81.00
----	---------	---------	----------	---------

**SUS 316L, (stainless steel A4)  
PHILLIPS FLAT HEAD MACHINE SCREW  
JIS B1111 appendix**

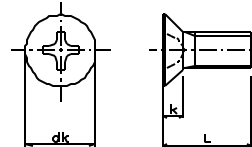
	M3	M4	M5	M6	M8	M10	M12
dk	6	8	10	12	16	20	24
k	1.75	2.3	2.8	3.4	4.4	5.5	6.5

Please order this product by series number R830-B1111FH-316L-DIAMETER X LENGTH

Example: R830-B1111FH-316L-M4x10

USD/100pcs

	M3		M4		M5		M6		M8	
box q'ty	1		1		1		1		1	
L	1-99pcs	100 & above	1-99pcs	100 & above	1-99pcs	100 & above	1-49pcs	50 & above	1-49pcs	50 & above
5	\$21.00	\$12.00								
6	\$21.00	\$12.00	\$28.00	\$18.00						
8	\$21.00	\$12.00	\$28.00	\$18.00	\$39.00	\$28.00				
10	\$21.00	\$12.00	\$28.00	\$18.00	\$39.00	\$28.00	\$63.00	\$46.00		
12	\$21.00	\$14.00	\$28.00	\$18.00	\$42.00	\$32.00	\$63.00	\$46.00		
15	\$25.00	\$14.00	\$32.00	\$21.00	\$49.00	\$35.00	\$70.00	\$53.00	\$140.00	\$105.00
16	\$25.00	\$14.00	\$32.00	\$21.00	\$49.00	\$35.00	\$70.00	\$53.00	\$140.00	\$105.00
20	\$28.00	\$18.00	\$35.00	\$25.00	\$56.00	\$39.00	\$88.00	\$60.00	\$158.00	\$112.00
25	\$32.00	\$21.00	\$39.00	\$28.00	\$63.00	\$42.00	\$98.00	\$70.00	\$175.00	\$123.00
30	\$35.00	\$25.00	\$46.00	\$32.00	\$70.00	\$53.00	\$105.00	\$81.00	\$193.00	\$133.00
35			\$56.00	\$39.00	\$81.00	\$60.00	\$116.00	\$95.00	\$210.00	\$158.00
40	\$56.00	\$39.00	\$60.00	\$42.00	\$98.00	\$70.00	\$123.00	\$102.00	\$228.00	\$175.00
45			\$70.00	\$53.00	\$105.00	\$88.00	\$140.00	\$123.00	\$245.00	\$193.00
50			\$88.00	\$60.00	\$123.00	\$105.00	\$175.00	\$140.00	\$263.00	\$210.00
55			\$123.00	\$105.00	\$140.00	\$123.00	\$193.00	\$158.00	\$298.00	\$245.00
60			\$140.00	\$123.00	\$175.00	\$140.00	\$210.00	\$175.00	\$315.00	\$263.00
65			\$158.00	\$140.00	\$193.00	\$158.00	\$245.00	\$193.00	\$333.00	\$280.00
70					\$263.00	\$210.00	\$298.00	\$263.00	\$350.00	\$298.00
75					\$298.00	\$245.00	\$333.00	\$298.00	\$385.00	\$315.00
80							\$403.00	\$350.00	\$420.00	\$350.00
90							\$455.00	\$385.00	\$525.00	\$455.00
100							\$525.00	\$420.00	\$630.00	\$560.00

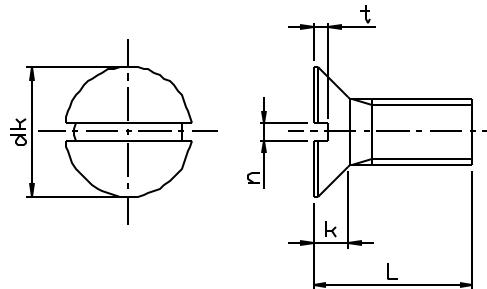


**SUS 316L, (stainless steel A4)  
SLOTTED FLAT HEAD BOLT  
JIS B1179**

Please order this product by series number R830-B1179-316L-DIAMETER X LENGTH

Example: R830-B1179-316L-M10X25

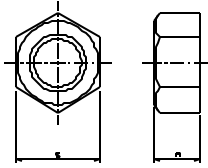
	M10		M12		
box q'ty	1		1		
L	1-49pcs	50 & above	1-49pcs	50 & above	USD/100pcs
20	\$280.00	\$210.00	\$455.00	\$385.00	
25	\$280.00	\$210.00	\$455.00	\$385.00	
30	\$298.00	\$228.00	\$473.00	\$403.00	
35	\$315.00	\$245.00	\$490.00	\$420.00	
40	\$350.00	\$280.00	\$525.00	\$455.00	
50	\$385.00	\$315.00	\$595.00	\$525.00	
60	\$455.00	\$385.00	\$630.00	\$560.00	
70	\$560.00	\$490.00	\$700.00	\$630.00	
80	\$665.00	\$595.00	\$980.00	\$875.00	
100	\$805.00	\$700.00	\$1,225.00	\$1,050.00	



**MARYLAND METRICS**  
 phones: (410)358-3130 (800)638-1830 faxes: (410)358-3142 (800)872-9329  
 URL: <http://mdmetric.com> E-mail: [techinfo@mdmetric.com](mailto:techinfo@mdmetric.com)  
 P.O.Box 261 Owings Mills, MD 21117 USA  
**FASTENER CATALOG - CHAPTER S4**

Many items in this chapter are not stocked in the US. Please allow adequate lead time for delivery and factory minimum order requirements.

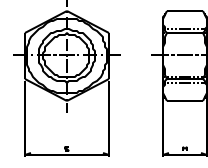
**SUS 316L, stainless A4  
HEX NUT, JIS type 1  
JIS B1181 appendix**



Please order this product by series number R830-B1181T1-316L-DIAMETER  
Example: R830-B1181T1-316L-M4

	s	m	box q'ty	1-49pcs	50 & above	USD/100pcs
M2	4	1.6	1	\$70.00	\$53.00	
M3	5.5	2.4	1	\$28.00	\$18.00	
M4	7	3.2	1	\$28.00	\$18.00	
M5	8	4	1	\$28.00	\$19.00	
M6	10	5	1	\$32.00	\$21.00	
M8	13	6.5	1	\$46.00	\$32.00	
M10	17	8	1	\$77.00	\$63.00	
M12	19	10	1	\$119.00	\$98.00	
M14	22	11	1			
M16	24	13	1	\$228.00	\$175.00	
M18	27	15	1			
M20	30	16	1	\$403.00	\$350.00	
M22	32	18	1	\$700.00	\$630.00	
M24	36	19	1	\$910.00	\$823.00	
M27	41	22	1	\$1,330.00	\$1,225.00	
M30	46	24	1	\$1,820.00	\$1,680.00	
M33	50	26	1	\$2,450.00	\$2,275.00	
M36	55	29	1	\$3,325.00	\$3,150.00	
M39	60	31	1	\$5,250.00	\$4,900.00	
M42	65	34	1	\$5,775.00	\$5,425.00	
M45	70	36	1	\$9,100.00	\$8,750.00	
M48	75	38	1	#####	#####	
M52	80	42	1	#####	#####	

**SUS 316L, stainless A4  
HEX NUT, JIS type 2  
JIS B1181 appendix**



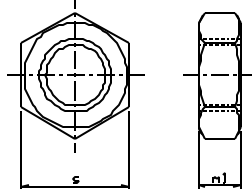
Please order this product by series number R830-B1181-316L-DIAMETER  
Example: R830-B1181-316L-M8

	s	m	box q'ty	1-49pcs	50 & above	USD/100pcs
M8	13	6.5	1	\$95.00	\$95.00	
M10	17	8	1	\$130.00	\$130.00	
M12	19	10	1	\$175.00	\$175.00	
M14	22	11	1	\$263.00	\$263.00	
M16	24	13	1	\$333.00	\$333.00	
M18	27	15	1	\$490.00	\$455.00	
M20	30	16	1	\$595.00	\$560.00	
M22	32	18	1	\$770.00	\$718.00	
M24	36	19	1	\$1,015.00	\$945.00	

**MARYLAND METRICS**  
phones: (410)358-3130 (800)638-1830 faxes: (410)358-3142 (800)872-9329  
URL: <http://mdmetric.com> E-mail: [techinfo@mdmetric.com](mailto:techinfo@mdmetric.com)  
P.O.Box 261 Owings Mills, MD 21117 USA  
**FASTENER CATALOG - CHAPTER S4**

Many items in this chapter are not stocked in the US. Please allow adequate lead time for delivery and factory minimum order requirements.

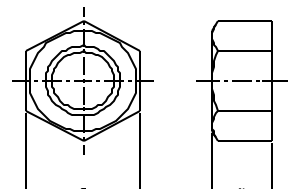
**SUS 316L, stainless A4  
HEX NUT, JIS type 3 (JAM NUT)  
JIS B1181 appendix**



Please order this product by series number R830-B1181T3-316L-DIAMETER  
Example: R830-B1181T3-316L-M8

	s	m1	box q'ty	1-49pcs	50 & above	USD/100pcs
M6	10	3.6	1	\$60.00	\$42.00	
M8	13	5	1	\$81.00	\$63.00	
M10	17	6	1	\$112.00	\$95.00	
M12	19	7	1	\$158.00	\$140.00	
M14	22	8	1	\$231.00	\$210.00	
M16	24	10	1	\$287.00	\$263.00	
M18	27	11	1	\$420.00	\$385.00	
M20	30	12	1	\$525.00	\$490.00	
M22	32	13	1	\$648.00	\$595.00	
M24	36	14	1	\$875.00	\$805.00	
M27	41	16	1	\$1,295.00	\$1,190.00	
M30	46	18	1	\$1,750.00	\$1,610.00	
M33	50	20	1	\$2,345.00	\$2,170.00	
M36	55	21	1	\$3,150.00	\$2,975.00	
M39	60	23	1	\$4,550.00	\$4,200.00	

**SUS 316L, stainless A4  
HIGH HEX NUT, height 1xd**



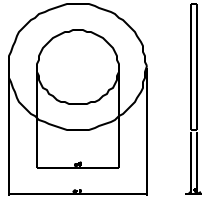
Please order this product by series number R830-U5587-316L-DIAMETER  
Example: R830-U5587-316L-M10

	s	m	box q'ty	1-49pcs	50 & above	USD/100pcs
M10	17	10	1	\$175.00	\$175.00	
M12	19	12	1	\$228.00	\$228.00	
M14	22	14	1	\$368.00	\$368.00	
M16	24	16	1	\$455.00	\$455.00	
M18	27	18	1	\$735.00	\$630.00	
M20	30	20	1	\$770.00	\$700.00	
M22	32	22	1	\$1,050.00	\$945.00	
M24	36	24	1	\$1,330.00	\$1,225.00	

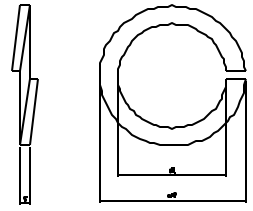
**Continuation**

	s	m1	box q'ty	1-49pcs	50 & above	USD/100pcs
M42	65	25	1	\$5,600.00	\$5,250.00	
M45	70	27	1	\$8,400.00	\$8,050.00	
M48	75	29	1	\$11,200.00	\$10,500.00	
M52	80	31	1	\$16,100.00	\$15,400.00	

**SUS 316L, (stainless steel A4)  
ROUND WASHER**



**SUS 316L, (stainless steel A4)  
SPRING WASHER**



Please order this product by series number R830-125-316L-DIAMETER

Example: R830-125-316L-M8

	d2	t	box q'ty	1-49pcs	50 & above
M4	9	0.8	1	\$25.00	\$16.00
M5	10	1	1	\$25.00	\$16.00
M6	12.5	1.6	1	\$28.00	\$19.00
M8	17	1.6	1	\$35.00	\$25.00
M10	21	2	1	\$53.00	\$35.00
M12	24	2.5	1	\$70.00	\$49.00
M14	28	2.5	1	\$88.00	\$70.00
M16	30	3	1	\$88.00	\$70.00
M18	34	3	1	\$140.00	\$112.00
M20	37	3	1	\$140.00	\$112.00
M22	39	3	1	\$175.00	\$140.00
M24	44	4	1	\$228.00	\$193.00
M27	50	4	1	\$315.00	\$315.00
M30	56	4	1	\$315.00	\$245.00
M33	60	5	1	\$630.00	\$560.00
M36	66	5	1	\$945.00	\$840.00
M42	78	7	1	\$1,050.00	\$945.00
M45	85	7	1	\$1,400.00	\$1,225.00
M48	92	8	1	\$1,750.00	\$1,575.00

USD/100pcs

Please order this product by series number R830-127-316L-DIAMETER

Example: R830-127-316L-M8

	d2	t	box q'ty	1-49pcs	50 & above
M2	4.4	0.5	1	\$11.00	\$4.00
M2.6	5.3	0.6	1	\$11.00	\$4.00
M3	5.9	0.7	1	\$11.00	\$4.00
M4	7.6	1	1	\$11.00	\$4.00
M5	9.2	1.3	1	\$11.00	\$5.00
M6	12.2	1.5	1	\$18.00	\$9.00
M8	15.4	2	1	\$21.00	\$14.00
M10	18.4	2.5	1	\$28.00	\$18.00
M12	21.5	3	1	\$42.00	\$28.00
M14	24.5	3.5	1	\$63.00	\$49.00
M16	28	4	1	\$77.00	\$60.00
M18	31	4.6	1	\$123.00	\$95.00
M20	33.8	5.1	1	\$140.00	\$112.00
M22	37.7	5.6	1	\$193.00	\$154.00
M24	40.3	5.9	1	\$228.00	\$182.00
M27	45.3	6.4	1	\$385.00	\$385.00
M30	49.9	7.5	1	\$770.00	\$700.00
M33	54.7	8.2	1	\$1,260.00	\$1,138.00
M36	59.1	9	1	\$1,400.00	\$1,225.00
M39	63.1	9.5	1	\$1,785.00	\$1,610.00
M42	67	9.5	1	\$2,800.00	\$2,625.00
M45	70	9.5	1	\$3,150.00	\$2,800.00

USD/100pcs

**MARYLAND METRICS**

phones: (410)358-3130 (800)638-1830 faxes: (410)358-3142 (800)872-9329

URL: <http://mdmetric.com> E-mail: [techinfo@mdmetric.com](mailto:techinfo@mdmetric.com)

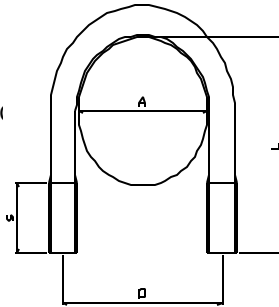
P.O.Box 261 Owings Mills, MD 21117 USA

**FASTENER CATALOG - CHAPTER S4**

Many items in this chapter are not stocked in the US. Please allow adequate lead time for delivery and factory minimum order requirements.

**SUS 316L, (stainless steel A4)  
U BOLT**

Please order this product by series number R830-UB-316L-THREAD DIAMETER x ( )  
Example: R830-UB-316L-M10x32A



USD/100pcs

CODE	for	pipe dia mm	M6		M8		M10		M12		M16		M20	
			1-49pcs	50 & above	1-29pcs	30 & above	1-19pcs	20 & above	1-9pcs	10 & above	1-4pcs	5 & above	1-4pcs	5 & above
8A	for 1/4	13.2	\$210.00	\$193.00										
10A	3/8	16.7	\$210.00	\$193.00										
15A	1/2	21.2	\$228.00	\$210.00	\$298.00	\$263.00	\$368.00	\$315.00						
20A	3/4	27.2	\$245.00	\$228.00	\$315.00	\$280.00	\$385.00	\$333.00						
25A	1"	34.0	\$298.00	\$280.00	\$333.00	\$298.00	\$420.00	\$368.00						
32A	1 1/4	42.7	\$350.00	\$315.00	\$368.00	\$333.00	\$455.00	\$403.00						
40A	1 1/2	48.6	\$385.00	\$350.00	\$403.00	\$350.00	\$490.00	\$438.00						
50A	2"	60.5	\$455.00	\$385.00	\$473.00	\$420.00	\$543.00	\$473.00	\$1,120.00	\$945.00				
65A	2 1/2	76.3	\$735.00	\$630.00	\$805.00	\$630.00	\$665.00	\$595.00	\$1,155.00	\$980.00				
80A	3"	89.1	\$840.00	\$700.00	\$875.00	\$700.00	\$770.00	\$665.00	\$1,295.00	\$1,120.00				
100A	4"	114.3			\$1,155.00	\$980.00	\$1,225.00	\$1,050.00	\$1,540.00	\$1,365.00	\$2,800.00	\$2,450.00		
125A	5"	139.8					\$1,750.00	\$1,575.00	\$1,750.00	\$1,575.00	\$3,150.00	\$2,800.00		
150A	6"	165.2					\$2,100.00	\$1,785.00	\$1,960.00	\$1,785.00	\$3,675.00	\$3,325.00		
200A	8"	216.3							\$2,275.00	\$2,100.00	\$4,375.00	\$4,025.00	\$8,050.00	\$7,350.00
250A	10"	267.4									\$5,775.00	\$5,425.00	\$8,750.00	\$8,050.00
300A	12"	318.5									\$5,950.00	\$5,600.00	\$10,500.00	\$9,800.00
350A	14"	355.6											\$13,300.00	\$12,250.00

**MARYLAND METRICS**  
 phones: (410)358-3130 (800)638-1830 faxes: (410)358-3142 (800)872-9329  
 URL: <http://mdmetric.com> E-mail: [techinfo@mdmetric.com](mailto:techinfo@mdmetric.com)  
 P.O.Box 261 Owings Mills, MD 21117 USA  
**FASTENER CATALOG - CHAPTER S4**

Many items in this chapter are not stocked in the US. Please allow adequate lead time for delivery and factory minimum order requirements.