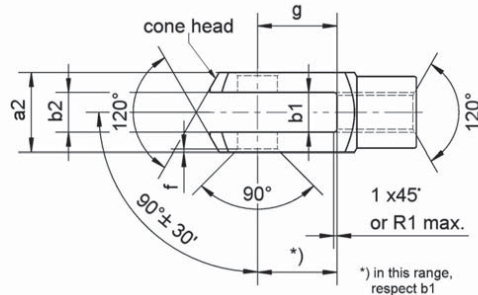
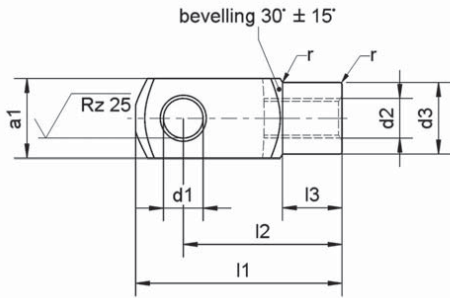


# Clevises DIN 71 752/DIN ISO 8140



**Example for ordering:**

Clevis according to DIN 71 752  
 d1=10 mm, slot length g=40 mm, with metric fine-pitch thread  
 d2=M 10x1.25; Clevis G 10x40, M 10x1.25  
 Order number: 14 02 0010 0040



mbo standard 02

Size	Order number	d1 H 9	g ± 0.5	a <sup>1)2)</sup>		b1 B 13	b2 Adm. variation	d2 <sup>1)</sup>		d3 ±0.3	f ±0.2	l1 ±0.5	l2 Adm. variation	l3 ±0.2	r <sup>3)</sup>	Mass (7.85 kg/dm <sup>3</sup> ) kg ≈		
				h 11 + 0.30 - 0.16	B 13			Regular thread	Fine-pitch thread									
G 4x8	10 02 0004 0008	4	8	8	4	B 13		M 4x0.7		8	0.5	21	16	± 0.3	6	0.5	0.005	
G 4x16	10 02 0004 0016	4	16	8	4					M 4x0.7		8	0.5		29	24	6	0.5
G 5x10	10 02 0005 0010	5	10	10	5					M 5x0.8		9	0.5	26	20	7.5	0.5	0.009
G 5x20	10 02 0005 0020	5	20	10	5					M 5x0.8		9	0.5	36	30	7.5	0.5	0.013
G 6x12	10 02 0006 0012	6	12	12	6					M 6x1		10	0.5	31	24	9	0.5	0.015
G 6x24	10 02 0006 0024	6	24	12	6					M 6x1		10	0.5	43	36	9	0.5	0.021
G 8x16	10 02 0008 0016	8	16	16	8					M 8x1.25		14	0.5	42	32	12	0.5	0.037
G 8x16FG	12 02 0008 0016	8	16	16	8					M 8x1		14	0.5	42	32	12	0.5	0.037
G 8x32	10 02 0008 0032	8	32	16	8					M 8x1.25		14	0.5	58	48	12	0.5	0.054
G 8x32FG	12 02 0008 0032	8	32	16	8					M 8x1		14	0.5	58	48	12	0.5	0.054
G 10x20	10 02 0010 0020	10	20	20	10					M 10x1.5		18	0.5	52	40	15	0.5	0.074
G 10x20FG	14 02 0010 0020	10	20	20	10					M 10x1.25		18	0.5	52	40	15	0.5	0.074
G 10x40	10 02 0010 0040	10	40	20	10					M 10x1.5		18	0.5	72	60	15	0.5	0.116
G 10x40FG	14 02 0010 0040	10	40	20	10					M 10x1.25		18	0.5	72	60	15	0.5	0.116
G 12x24	10 02 0012 0024	12	24	24	12					M 12x1.75		20	0.5	62	48	18	0.5	0.121
G 12x24FG	14 02 0012 0024	12	24	24	12					M 12x1.25		20	0.5	62	48	18	0.5	0.121
G 12x48	10 02 0012 0048	12	48	24	12			M 12x1.75		20	0.5	86	72	18	0.5	0.175		
G 12x48FG	14 02 0012 0048	12	48	24	12			M 12x1.25		20	0.5	86	72	18	0.5	0.175		
G 14x28	10 02 0014 0028	14	28	27	14	+ 0.7 + 0.15		M 14x2		24	1	72	56	22.5	1	0.178		
G 14x28FG	16 02 0014 0028	14	28	27	14					M 14x1.5		24	1	72	56	22.5	1	0.178
G 14x56	10 02 0014 0056	14	56	27	14					M 14x2		24	1	101	85	22.5	1	0.258
G 14x56FG	16 02 0014 0056	14	56	27	14					M 14x1.5		24	1	101	85	22.5	1	0.258
G 16x32	10 02 0016 0032	16	32	32	16					M 16x2		26	1	83	64	24	1	0.282
G 16x32FG	16 02 0016 0032	16	32	32	16					M 16x1.5		26	1	83	64	24	1	0.282
G 16x64	10 02 0016 0064	16	64	32	16					M 16x2		26	1	115	96	24	1	0.411
G 16x64FG	16 02 0016 0064	16	64	32	16					M 16x1.5		26	1	115	96	24	1	0.411

1) code for thread:  
 regular thread  
 regular thread, left-handed  
 fine-pitch thread  
 fine-pitch thread, left-handed

no code  
 LH  
 FG  
 FGLH

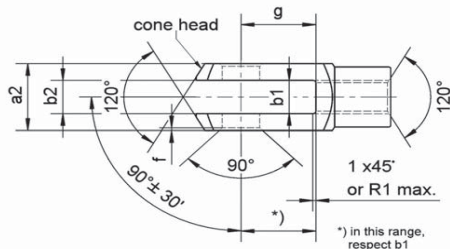
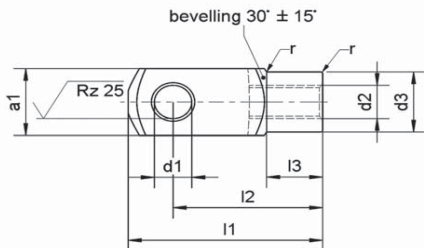
2) for semifinished products, tolerance h 11 according to DIN 178  
 3) radius or 45° beveling (at manufacturer's choice)

03\_01  
 01/2007

**For material, surface protection, special versions and necessary retaining elements, please refer to the following supplementary page to DIN 71 752/DIN ISO 8140**  
**Special versions upon request**

# Clevises similar to DIN 71 752/ Supplement DIN ISO 8140

and according to CETOP standard



**Example for ordering:** Clevis according to CETOP with bore  $d_1 = 35$  mm, slot length  $g = 54$  mm with metric fine-pitch thread  $d_2 = M 36 \times 2$ ;  
 Clevis G 35x54FG  
 Order number: 18 02 0036 3554



mbo standard 02

Size	Order number	d1 H 9	g ± 0.5	a1 <sup>2)</sup> h 11	a2 ± 0.50 - 0.20	b 13 B 13	b2 Adm. variation	d2 <sup>1)</sup>		d3	f ± 0.2	l1 ± 0.5	l2 Adm. variation	l3 ± 0.3	r <sup>3)</sup> ± 0.5	Mass (7.85 kg/dm <sup>3</sup> ) kg ≈
								Regular thread	Fine-pitch thread							
G 18x36	10 02 0018 0036	18	36	36	18			M 18x2.5	-	30	1	94	72	27	1.5	0.39
G 18x36FG	16 02 0018 0036	18	36	36	18			-	M 18x1.5	30	1	94	72	27	1.5	0.39
G 20x40	10 02 0020 0040	20	40	40	20			M 20x2.5	-	34	1	105	80	30	1.5	0.55
G 20x40FG*	16 02 0020 0040	20	40	40	20			-	M 20x1.5	34	1	105	80	30	1.5	0.55
G 20x80	10 02 0020 0080	20	80	40	20			M 20x2.5	-	34	1	145	120	30	1.5	0.8
G 20x80FG	16 02 0020 0080	20	80	40	20			-	M 20x1.5	34	1	145	120	30	1.5	0.8
G 25x50	10 02 0024 2550	25	50	50	25			M 24x3	-	42	1.5	132	100	36	1.5	1.1
G 25x50FG*	18 02 0024 2550	25	50	50	25			-	M 24x2	42	1.5	132	100	36	1.5	1.1
G 28x56	10 02 0027 2856	28	56	55	28			M 27x3	-	48	1.5	148	112	40	2	1.5
G 28x56FG	18 02 0027 2856	28	56	55	28		+ 0.7	-	M 27x2	48	1.5	148	112	40	2	1.5
G 30x54FG*	18 02 0027 3054	30	54	55	30		+ 0.15	-	M 27x2	48	1.5	148	110	40	2	1.44
G 30x60	10 02 0030 0060	30	60	60	30			M 30x3.5	-	52	1.5	160	120	42	2	1.97
G 30x60FG	18 02 0030 0060	30	60	60	30			-	M 30x2	52	1.5	160	120	42	2	1.97
G 35x54FG*	18 02 0036 3554	35	54	70	35			-	M 36x2	60	2	188	144	54	3	2.93
G 35x72	10 02 0036 3572	35	72	70	35			M 36x4	-	60	2	188	144	54	3	2.93
G 35x72FG	18 02 0036 3572	35	72	70	35			-	M 36x2	60	2	188	144	54	3	2.93
G 36x72	10 02 0036 0072	35	72	70	36			M 36x4	-	60	2	188	144	54	3	2.93
G 36x72FG	18 02 0036 0072	35	72	70	36			-	M 36x2	60	2	188	144	54	3	2.93
G 40x84FG*	18 02 0042 4084	40	84	85	40			-	M 42x2	70	3	232	168	63.5	5	5.64
G 42x84	10 02 0042 0084	42	84	85	42			M 42x4.5	-	70	3	232	168	63.5	5	5.34
G 42x84FG	18 02 0042 0084	42	84	85	42			-	M 42x2	70	3	232	168	63.5	5	5.34
G 50x96	10 02 0048 5096	50	96	96	50			M 48x5	-	82	3	265	192	73	5	7.86
G 50x96FG*	18 02 0048 5096	50	96	96	50			-	M 48x2	82	3	265	192	73	5	7.86

<sup>1)</sup> code for thread:  
 regular thread no code  
 regular thread, left-handed LH  
 fine-pitch thread FG  
 fine-pitch thread, left-handed FGLH

<sup>2)</sup> for semifinished products, tolerance h 11 according to DIN 178  
<sup>3)</sup> radius or 45° beveling (at manufacturer's choice)

<sup>\*)</sup> these clevises are according to CETOP RP102P (except cone head forms)

## Material:

1.0718 (11SMnPb30+C) polished oiled or at manufacturer's choice

## Surface protection:

optional: phosphatized and oiled, electroplated galvanized; passivated in white-blue (silver/clear) or yellow

## Special versions upon request

## Special version:

left-handed and other threads or special slot widths "b" and transversal hole upon request

## Retaining:

with folding spring bolts (mbo catalog section 2) or with bolts (mbo catalog section 4) and retainers (mbo catalog section 13) or washer and cotter pin; also see clevis joint combinations (mbo catalog section 11)