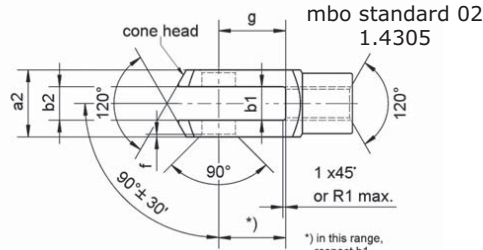
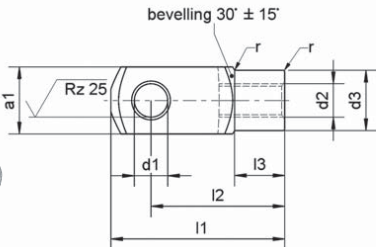


Clevises DIN 71 752/DIN ISO 8140



Example for ordering: Clevis according to DIN 71 752 d1 = 10 mm, slot length g = 40 mm, stainless steel version, with metric fine-pitch thread d2 = M 10x1.25; Clevis G 10x40 M 10x1.25; Order number: 14 02 4305 1040

Size	Order number	d1 H 9	g ± 0.5	a1 ²⁾ h 11	a2 + 0.3 - 0.16	b1 B 13	b2 Adm. variation	d2 ¹⁾		d3 ± 0.3 ± 0.2 ± 0.5	f ± 0.5	l1	l2 Adm. variation	l3 ± 0.2	r ³⁾	Mass (7.85 kg/dm ³) kg ≈	
								Regular thread	Fine-pitch thread								
G 4x8	10 02 4305 0408	4	8	8		4	B 13	M 4x0.7		8	0.5	21	16	± 0.3	6	0.5	0.005
G 4x16	10 02 4305 0416	4	16	8		4		M 4x0.7		8	0.5	29	24		6	0.5	0.007
G 5x10	10 02 4305 0510	5	10	10		5		M 5x0.8		9	0.5	26	20		7.5	0.5	0.009
G 5x20	10 02 4305 0520	5	20	10		5		M 5x0.8		9	0.5	36	30		7.5	0.5	0.013
G 6x12	10 02 4305 0612	6	12	12		6		M 6x1		10	0.5	31	24		9	0.5	0.015
G 6x24	10 02 4305 0624	6	24	12		6		M 6x1		10	0.5	43	36		9	0.5	0.021
G 8x16	10 02 4305 0816	8	16	16		8		M 8x1.25		14	0.5	42	32		12	0.5	0.037
G 8x16FG	12 02 4305 0816	8	16	16		8		M 8x1		14	0.5	42	32		12	0.5	0.037
G 8x32	10 02 4305 0832	8	32	16		8		M 8x1.25		14	0.5	58	48		12	0.5	0.054
G 8x32FG	12 02 4305 0832	8	32	16		8		M 8x1		14	0.5	58	48		12	0.5	0.054
G 10x20	10 02 4305 1020	10	20	20		10		M 10x1.5		18	0.5	52	40		15	0.5	0.074
G 10x20FG	14 02 4305 1020	10	20	20		10		M 10x1.25		18	0.5	52	40		15	0.5	0.074
G 10x40	10 02 4305 1040	10	40	20		10		M 10x1.5		18	0.5	72	60		15	0.5	0.116
G 10x40FG	14 02 4305 1040	10	40	20		10	M 10x1.25		18	0.5	72	60	15	0.5	0.116		
G 12x24	10 02 4305 1224	12	24	24		12	M 12x1.75		20	0.5	62	48	18	0.5	0.121		
G 12x24FG	14 02 4305 1224	12	24	24		12	M 12x1.25		20	0.5	62	48	18	0.5	0.121		
G 12x48	10 02 4305 1248	12	48	24		12	M 12x1.75		20	0.5	86	72	18	0.5	0.175		
G 12x48FG	14 02 4305 1248	12	48	24		12	M 12x1.25		20	0.5	86	72	18	0.5	0.175		
G 14x28	10 02 4305 1428	14	28	27		14	M 14x2		24	1	72	56	22.5	1	0.178		
G 14x28FG	16 02 4305 1428	14	28	27		14	M 14x1.5		24	1	72	56	22.5	1	0.178		
G 14x56	10 02 4305 1456	14	56	27		14	M 14x2		24	1	101	85	22.5	1	0.258		
G 14x56FG	16 02 4305 1456	14	56	27		14	M 14x1.5		24	1	101	85	22.5	1	0.258		
G 16x32	10 02 4305 1632	16	32	32		16	M 16x2		26	1	83	64	24	1	0.282		
G 16x32FG	16 02 4305 1632	16	32	32		16	M 16x1.5		26	1	83	64	24	1	0.282		
G 16x64	10 02 4305 1664	16	64	32		16	M 16x2		26	1	115	96	24	1	0.411		
G 16x64FG	16 02 4305 1664	16	64	32		16	M 16x1.5		26	1	115	96	24	1	0.411		

Clevises similar to DIN 71 752/Supplement DIN ISO 8140 and according to CETOP standard

Size	Order number	d1 H 9	g ± 0.5	a1 ²⁾ h 11	a2 H 15 - 0.2	b1 B 13	b2 Adm. variation	d2 ¹⁾		d3 ± 0.3 ± 0.2 ± 0.5	f ± 0.5	l1	l2 Adm. variation	l3 ± 0.2	r ³⁾	Mass (7.85 kg/dm ³) kg ≈	
								Regular thread	Fine-pitch thread								
G 20x40	10 02 4305 2040	20	40	40		20	+ 0.7 + 0.15	M 20x2.5		34	1	105	80	± 0.4	30	1.5	0.55
G 20x40FG*	16 02 4305 2040	20	40	40		20		M 20x1.5		34	1	105	80		30	1.5	0.55
G 25x50	10 02 4305 2550	25	50	50		25		M 24x3		42	1.5	132	100		36	1.5	1.1
G 25x50FG*	18 02 4305 2550	25	50	50		25		M 24x2		42	1.5	132	100		36	1.5	1.1
G 30x54FG*	18 02 0027 3054	30	54	55		30		M 27x2		48	1.5	148	110		40	2	1.44

¹⁾ code for thread:

regular thread: no code
 regular thread, left-handed: LH
 fine-pitch thread: FG
 fine-pitch thread, left-handed: FGLH

²⁾ for semifinished products, tolerance h 11 according to DIN 178

³⁾ radius or 45° beveling (at manufacturer's choice)

* these clevises are according to CETOP RP102P (except cone head forms)

Material:

stainless steel 1.4305 (X8CrNiS18-9)

Retaining:

with bolts (mbo catalog section 6) and locking washers DIN 6799 (mbo catalog page 13_03) or washer and cotter pin; also see clevis joint combinations (mbo catalog section 11)

Special version:

left-handed and other threads or special slot widths "b" and transversal hole upon request; please send us your inquiry