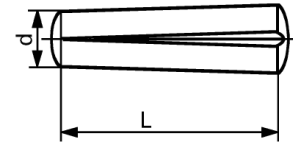


Grooved pins, steel



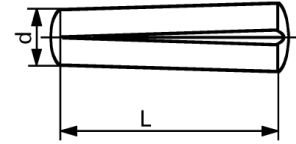
ISO 8744 / DIN 1471

DIN 1470-1475: same prices

d	h9	1,5		2		2,5		3	
L	quantity	100	1000	100	1000	100	1000	100	1000
4		8.60	6.30						
5		8.60	6.30	9.40	6.40				
6		8.60	6.30	9.50	6.50	11.50	7.30	11.60	7.40
8		8.60	6.30	9.50	6.50	11.50	7.30	11.60	7.40
10		9.50	7.20	9.60	6.60	11.60	7.40	11.60	7.40
12		9.70	7.40	9.60	6.60	11.70	7.50	11.90	7.60
14				9.70	6.70	11.70	7.50		
16		9.90	7.60	9.80	6.80	11.90	7.60	12.10	7.70
(18)						11.90	7.60		
20		10.-	7.70	11.-	8.40	12.10	7.70	12.30	7.90
(22)						13.60	10.50		
24				11.20	8.60	12.70	9.20	12.50	8.10
(26)				11.50	8.90	13.-	9.50	12.80	8.30
(28)								13.20	8.60
30				12.-	9.40	14.-	11.-	13.20	8.60
36								14.30	9.40

() length in parenthesis indicates size according ISO

Grooved pins, steel



ISO 8744 / DIN 1471

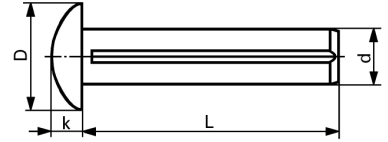
DIN 1470-1475: same prices

d	h11	4		5		6		8	10
L	quantity	100	1000	100	1000	100	1000	100	100
8		12.80	8.30						
10		12.90	8.40	15.-	10.-				
12		13.10	8.50	15.30	10.30	19.80	13.70		
14		13.20	8.60	15.40	10.40	20.-	13.90	29.-	
16		13.30	8.70	15.80	10.60	20.25	14.10	29.50	
(18)						20.50	14.20		
20		13.40	8.80	16.20	11.-	20.75	14.40	31.-	55.-
(22)		13.60	8.90	16.40	11.10				
24		13.80	9.10	16.80	11.40	21.-	14.70	32.50	
(25)						21.25	14.70		
(26)				17.30	11.80			33.25	
(28)		14.20	9.40	17.50	11.90	22.-	15.40		
30		14.30	9.50	18.-	12.30	22.25	15.70	34.50	64.-
(32)		14.60	9.70	18.30	12.50	22.75	15.90	34.50	
36		15.90	10.70	18.90	13.-	23.75	16.80	35.50	
40		16.50	11.10	19.70	13.60	25.-	17.70	36.50	76.50
45						29.-	20.75	39.50	
50		18.30	12.50			31.50	22.75	43.50	94.50
55									102.-
60				24.25	17.-	36.-	27.25	53.50	116.-
70						38.75	29.50		153.-
80								73.50	
100									217.-

() length in parenthesis indicates size according ISO

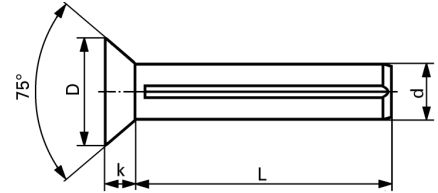
Round head grooved pins, steel

ISO 8746 / DIN 1476



Countersunk (flat) head grooved pins, steel

ISO 8747 / DIN 1477

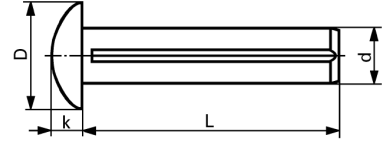


Zinc plated

d	1,4		1,6		2		2,5	
D ± 0,2	2,4		2,8		3,5		4,4	
(ISO 8746) k max.	0,9		1,1		1,3		1,6	
(ISO 8747) k ≈	0,7		0,8		1		1,2	
L quantity	100	1000	100	1000	100	1000	100	1000
3	5.-	3.50	5.-	3.50	5.-	3.10		
4	5.-	3.50	5.-	3.50	5.-	3.10	6.-	4.-
5	5.-	3.50	5.-	3.90	5.-	3.45	6.-	4.-
6	5.50	3.80	6.-	4.30	5.-	3.45	6.-	4.-
8					5.-	3.45	6.-	4.20
10					5.-	3.60	6.-	4.40

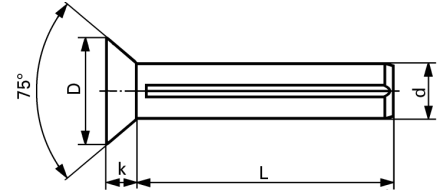
Round head grooved pins, steel

ISO 8746 / DIN 1476



Countersunk (flat) head grooved pins, steel

ISO 8747 / DIN 1477

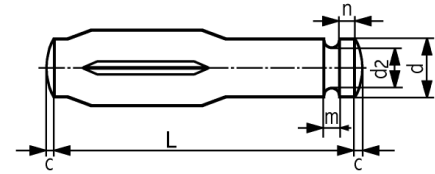


Zinc plated

d	3		4		5		6		8
D ± 0,4	5,2		7		8,8		10,5		14
(ISO 8746) k max.	1,95		2,55		3,15		3,75		5
(ISO 8747) k ≈	1,4		2		2,5		3		3,9
L quantity	100	1000	100	1000	100	1000	100	1000	100
4	5.-	3.75							
5	5.50	3.90							
6	5.50	3.90	8.-	5.-					
8	5.50	4.-	8.-	5.-	11.30	7.20	13.30	9.30	
10	5.50	4.10	9.40	6.40	12.40	8.-	15.20	11.70	
12	5.50	4.20	9.80	6.80	13.80	9.60	15.50	12.-	
16	6.50	4.80	9.80	6.80	14.80	10.50	18.20	13.90	44.-
18	8.50	6.30							
20			9.80	6.80	15.-	10.80	19.75	15.30	47.50
25					15.20	11.-	23.-	19.60	48.-
30									59.-

Grooved pins, steel

DIN 1469-C



d	h 9/h11	3		4		5		8	
c		0,4		0,5		0,6		0,8	
d2		1,5		2,4		2,8		3,8	
n=m		1		1,4		1,6		1,6	
L	quantity	100	1000	100	1000	100	1000	100	1000
6		22.75	15.90						
8		23.25	16.40						
10		24.-	16.90	25.-	17.70	27.25	19.50		
12		25.-	17.60	26.-	18.40	28.-	20.-		
16		26.25	18.70	27.25	19.50	29.50	21.-		
20		27.50	19.70	28.75	20.50	31.50	22.75	40.50	30.75
25		29.-	20.75	30.75	22.-	33.-	23.75	42.-	31.75
30				32.-	23.-	34.25	25.-	43.50	33.-
35				33.50	24.25	40.-	30.25	44.50	34.25
40				34.50	25.25	41.50	31.50	46.50	35.75