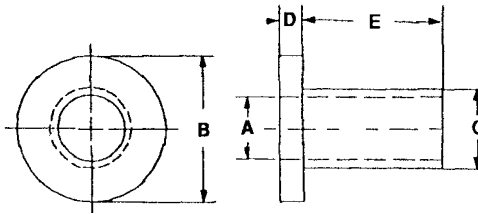


MOLDED NYLON SCREW INSULATORS

*Available in other materials. See materials list in index.
Other sizes available on request.

*Available in the following materials:

Material Code No.	Material Name
-18	Nylon 6/6, (natural)
-78	Nylon 6/6, (black)



Conversion note: 1 inch = 25.4 mm 1 mm = 0.03937 inch
 Part No. FN104 - (Size Code No.) - (Material Code No.)

Size Code No.	A	B	C	D	E	Size Code No.	A	B	C	D	E	Size Code No.	A	B	C	D	E
-1	.090	.181	.120	.047	.125	-18	.140	.290	.170	.047	.125	-35	.200	.399	.260	.062	.500
-2	.090	.181	.120	.047	.187	-19	.140	.290	.170	.047	.156	-36	.200	.399	.260	.062	.562
-3	.090	.181	.120	.047	.250	-20	.140	.290	.170	.047	.187	-37	.200	.399	.260	.062	.625
-4	.090	.181	.120	.047	.375	-21	.140	.290	.170	.047	.250	-38	.200	.399	.260	.062	.750
-5	.115	.235	.145	.047	.031	-22	.140	.290	.170	.047	.375	-39	.260	.513	.312	.062	.125
-6	.115	.235	.145	.047	.047	-23	.140	.290	.170	.047	.500	-40	.260	.513	.312	.062	.140
-7	.115	.235	.145	.047	.062	-24	.173	.344	.205	.062	.125	-41	.260	.513	.312	.062	.187
-8	.115	.235	.145	.047	.094	-25	.173	.344	.205	.062	.140	-42	.260	.513	.312	.062	.250
-9	.115	.235	.145	.047	.125	-26	.173	.344	.205	.062	.250	-43	.260	.513	.312	.062	.375
-10	.115	.235	.145	.047	.156	-27	.173	.344	.205	.062	.375	-44	.260	.513	.312	.062	.500
-11	.115	.235	.145	.047	.187	-28	.173	.344	.205	.062	.500	-45	.260	.513	.312	.062	.620
-12	.115	.235	.145	.047	.250	-29	.173	.344	.205	.062	.625	-46	.260	.513	.312	.062	.750
-13	.115	.235	.145	.047	.375	-30	.173	.344	.205	.062	.750	-47	.320	.620	.360	.062	.125
-14	.115	.235	.145	.047	.500	-31	.200	.399	.260	.062	.140	-48	.320	.620	.360	.062	.250
-15	.140	.290	.170	.047	.047	-32	.200	.399	.260	.062	.187	-49	.320	.620	.360	.062	.375
-16	.140	.290	.170	.047	.062	-33	.200	.399	.260	.062	.250	-50	.320	.620	.360	.062	.500
-17	.140	.290	.170	.047	.094	-34	.200	.399	.260	.062	.375	-51	.320	.620	.360	.062	.625

Tolerance on all dimensions: +/- .015.

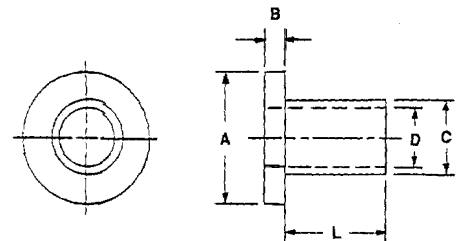
MOLDED NYLON METRIC SCREW INSULATORS

*Available in other materials. See materials list in index.
Other sizes available on request.

*Available in the following materials:

Material Code No.	Material Name
-18	Nylon 6/6, (natural)
-78	Nylon 6/6, (black)

ALL DIMENSIONS GIVEN IN MILLIMETERS



Part No. EM300 - (Size Code No.) - (Material Code No.)

Size Code No.	L	A	B	C	D	Size Code No.	L	A	B	C	D	Size Code No.	L	A	B	C	D
-1	3	4,2	1,0	3,0	2,1	-12	9	6,2	1,0	4,0	3,1	-23	9	10,2	2,0	7,0	5,1
-2	4	4,2	1,0	3,0	2,1	-13	10	6,2	1,0	4,0	3,1	-24	4	12,2	2,0	8,0	6,1
-3	5	4,2	1,0	3,0	2,1	-14	3	8,2	1,5	6,0	4,1	-25	6	12,2	2,0	8,0	6,1
-4	6	4,2	1,0	3,0	2,1	-15	4	8,2	1,5	6,0	4,1	-26	8	12,2	2,0	8,0	6,1
-5	2	6,2	1,0	4,0	3,1	-16	5	8,2	1,5	6,0	4,1	-27	10	12,2	2,0	8,0	6,1
-6	3	6,2	1,0	4,0	3,1	-17	7	8,2	1,5	6,0	4,1	-28	12	12,2	2,0	8,0	6,1
-7	4	6,2	1,0	4,0	3,1	-18	9	8,4	1,5	6,0	4,1	-29	4	14,2	2,5	10,0	8,1
-8	5	6,2	1,0	4,0	3,1	-19	3	10,2	2,0	7,0	5,1	-30	6	14,2	2,5	10,0	8,1
-9	6	6,2	1,0	4,0	3,1	-20	4	10,2	2,0	7,0	5,1	-31	8	14,2	2,5	10,0	8,1
-10	7	6,2	1,0	4,0	3,1	-21	5	10,2	2,0	7,0	5,1	-32	10	14,2	2,5	10,0	8,1
-11	8	6,2	1,0	4,0	3,1	-22	7	10,2	2,0	7,0	5,1	-33	12	14,2	2,5	10,0	8,1

MOLDED SCREW INSULATORS

*Available in the following materials:

Material Code No.	Material Name	Material Code No.	Material Name
-3	Lexan®	-37	Kynar®, (PVDF)
-5	Ultem® 1000	-40	PFA, (Teflon®)
-6	Ultem® 2300, (black)	-60	Nylon 6/6, 30% Short Glass-filled
-11	Polypropylene	-77	Ultem® 2300, (natural)
-13	Polyethylene	-78	Nylon 6/6, (black)
-14	ABS	-194	Nylon 46, 30% Glass-filled, Heat Stabilized
-18	Nylon 6/6, (natural)	-195	Nylon 46, 30% Glass-filled, Flame Retardant, Heat Stabilized
-24	Delrin®		
-32	PCTFE		
-35	Noryl®		

*Available in other materials.
See materials list in index.
Other sizes available on request.

Conversion note: 1 inch = 25.4 mm 1 mm = 0.03937 inch

Part No. D270 - (Size Code No.) - (Material Code No.)

Size Code No.	A	B	C	D	E
-1	.090	.181	.120	.047	.125
-2	.090	.181	.110	.047	.187
-3	.090	.181	.120	.047	.187
-4	.090	.181	.120	.047	.250
-5	.090	.181	.120	.047	.375
-6	.115	.235	.145	.047	.032
-7	.115	.235	.145	.047	.047
-8	.115	.235	.145	.047	.094
-9	.115	.235	.145	.047	.125
-10	.115	.235	.145	.047	.150
-11	.115	.235	.145	.047	.156
-12	.115	.235	.145	.047	.187
-13	.115	.235	.145	.047	.250
-14	.115	.235	.145	.047	.375
-15	.115	.235	.145	.047	.500
-16	.140	.290	.170	.047	.125
-17	.140	.290	.170	.047	.156
-18	.140	.290	.170	.047	.187
-19	.140	.290	.170	.047	.250
-20	.140	.290	.170	.047	.375
-21	.140	.290	.170	.047	.094
-22	.140	.290	.170	.047	.500
-23	.173	.344	.205	.062	.140
-24	.173	.344	.205	.062	.250
-25	.173	.344	.205	.062	.375
-26	.173	.344	.205	.062	.500
-27	.173	.344	.205	.062	.625
-28	.173	.344	.205	.062	.750
-29	.200	.399	.260	.062	.250
-30	.200	.399	.260	.062	.375
-31	.200	.399	.260	.062	.500
-32	.200	.399	.260	.062	.625
-33	.200	.399	.260	.062	.750
-34	.260	.513	.312	.062	.187
-35	.260	.513	.312	.062	.250
-36	.260	.513	.312	.062	.375
-37	.260	.513	.312	.062	.500
-38	.260	.513	.312	.062	.625
-39	.260	.513	.312	.062	.750

