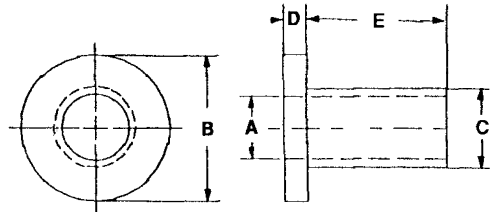


HIGH PERFORMANCE PLASTIC SCREW INSULATORS

*Available in the following materials:

Material Code No.	Material Name	Material Code No.	Material Name
-11	Polypropylene	-40	PFA, (Teflon®)
-18	Nylon 6/6, (natural)	-46	Polycarbonate
-27	PVC	-60	Nylon 6/6, 30% Short Glass-filled
-28	CPVC	-62	Acetal
-29	Teflon®	-194	Nylon 46, 30% Glass-filled, Heat Stabilized
-37	Kynar®, (PVDF)	-195	Nylon 46, 30% Glass-filled, Heat Stabilized, Fire Retardent [†]
-38	G-10 Fiber Glass		

*Available in other materials.
See materials list in index.
Other sizes available on request.



Conversion note: 1 inch = 25.4 mm 1 mm = 0.03937 inch
 Part No. FN109 - (Size Code No.) - (Material Code No.)

Size Code No.	A	B	C	D	E	Size Code No.	A	B	C	D	E
-1	.090	.181	.120	.047	.125	-27	.173	.344	.205	.062	.375
-2	.090	.181	.120	.047	.187	-28	.173	.344	.205	.062	.500
-3	.090	.181	.120	.047	.250	-29	.173	.344	.205	.062	.625
-4	.090	.181	.120	.047	.375	-30	.173	.344	.205	.062	.750
-5	.115	.235	.145	.047	.031	-31	.200	.399	.260	.062	.140
-6	.115	.235	.145	.047	.047	-32	.200	.399	.260	.062	.187
-7	.115	.235	.145	.047	.062	-33	.200	.399	.260	.062	.250
-8	.115	.235	.145	.047	.094	-34	.200	.399	.260	.062	.375
-9	.115	.235	.145	.047	.125	-35	.200	.399	.260	.062	.500
-10	.115	.235	.145	.047	.156	-36	.200	.399	.260	.062	.562
-11	.115	.235	.145	.047	.187	-37	.200	.399	.260	.062	.625
-12	.115	.235	.145	.047	.250	-38	.200	.399	.260	.062	.750
-13	.115	.235	.145	.047	.375	-39	.260	.513	.312	.062	.125
-14	.115	.235	.145	.047	.500	-40	.260	.513	.312	.062	.140
-15	.140	.290	.170	.047	.047	-41	.260	.513	.312	.062	.187
-16	.140	.290	.170	.047	.062	-42	.260	.513	.312	.062	.250
-17	.140	.290	.170	.047	.094	-43	.260	.513	.312	.062	.375
-18	.140	.290	.170	.047	.125	-44	.260	.513	.312	.062	.500
-19	.140	.290	.170	.047	.156	-45	.260	.513	.312	.062	.625
-20	.140	.290	.170	.047	.187	-46	.260	.513	.312	.062	.750
-21	.140	.290	.170	.047	.250	-47	.320	.620	.360	.062	.125
-22	.140	.290	.170	.047	.375	-48	.320	.620	.360	.062	.250
-23	.140	.290	.170	.047	.500	-49	.320	.620	.360	.062	.375
-24	.173	.344	.205	.062	.125	-50	.320	.620	.360	.062	.500
-25	.173	.344	.205	.062	.140	-51	.320	.620	.360	.062	.625
-26	.173	.344	.205	.062	.250						