



# Solar<sup>PLUS</sup> Enclosure in PC

## Series 10

Polycarbonate Enclosures with transparent, UV protected top and standard venting are ideal in photovoltaic installations and applications with challenging environments.

Electronic components and connections to Generators, Switches, Circuit Breakers and PCB's, etc. as well as customer specific configurations are IP 66/67 protected.

Pre-assembled Enclosures with Cable Strain Relied Fittings, Circular Connectors and Accessories as well as customer specific solutions are available.

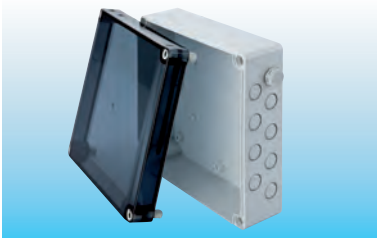
Conformity	
Polycarbonate Enclosure:	
Technical Informationen	
Protection according to EN 60529	IP 66 / 67
Impact rating according to EN 62262	PC: IK 08 / IK 08 (+35 °C / -25 °C)
Temperature range	PC: -50 °C...+100 °C
Flammability	PC: UL746C 5V (V-2)
Material	
Bottom	Fiber reinforced Polyester
Transparent cover	Polycarbonate
Cover Screws	Fiber reinforced Polyamid
Gasket	PUR (Polyurethane)
Standard color	
Bottom	Grey, RAL 7035
Cover	Smoked glass, transparent cover





## Solar PLUS Enclosure in PC

### 175 x 175 x 75 mm



#### Polycarbonate

#### Part Number

Smoked glass cover with metric knockouts,  
 A: 8 x M16, 1 x M12  
 C: 8 x M16, 1 x M12 Breather valve mounted

3.100.0664.57

#### Accessories

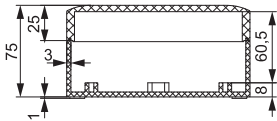
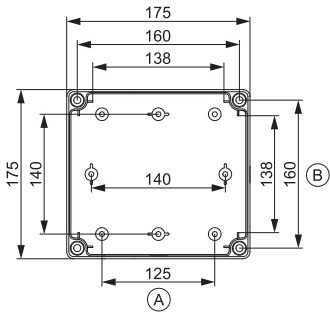
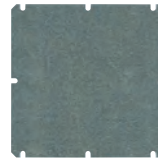
#### Part Number

Mounting plate,  
 1,5 mm thick, galvanized steel

3.120.0560.69

DIN Rail, DIN 35

3.120.0561.13



Assembly and machining services of your enclosures are available upon request.  
 Drawings with additional dimensions can be furnished upon request.

Cover screws and assembly screws are included.

Additional accessories on page 37.

### 175 x 175 x 100 mm



#### Polycarbonate

#### Part Number

Smoked glass cover with metric knockouts,  
 A: 8 x M16, 1 x M12  
 C: 8 x M16, 1 x M12 Breather valve mounted

3.100.0664.64

#### Accessories

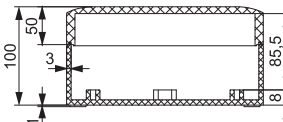
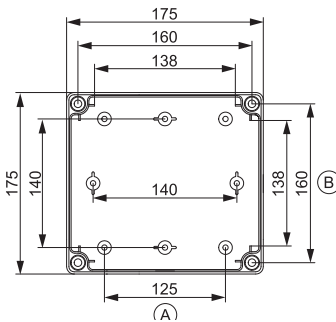
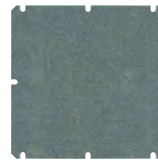
#### Part Number

Mounting plate,  
 1,5 mm thick, galvanized steel

3.120.0560.69

DIN Rail, DIN 35

3.120.0561.13



Assembly and machining services of your enclosures are available upon request.  
 Drawings with additional dimensions can be furnished upon request.

Cover screws and assembly screws are included.

Additional accessories on page 37.