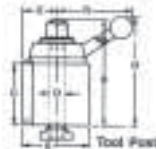


**SERIES 720:**

**SUPER PRECISION WEDGE TYPE TOOL POST AND TOOL HOLDER SETS**

Wedge Type Tool Posts are precision engineered to assure repetitive accuracy. Advanced design provides built in quick tool changing versatility with positive rigidity to meet the most exacting working tolerances. Quickly and easily installed on an engine, bench or turret lathe for a wide range of operations, from fine precise work to heavy duty cutting.



**Precision wedge type tool post sets** consist of one precision tool post plus five tool holders. One (1) each style: 1, 2, 4, 7, and 10

For Swing Up To	Order No.	Price
12	7105025	
10 - 15	7105030	
13 - 18	7105035	
14 - 20	7105040	

**WEDGE TYPE QUICK CHANGE TOOL POST**

Series	A	B	C	D	E	H	R	For Swing Up to	Order No.	Price
AXA	2-1/2	3-7/8	2-1/4	9/16	1-3/8	4-11/16	5-3/4	12"	7100125	
BXA	3	4-5/8	2-3/4	5/8	1-5/8	5-9/16	7-5/16	10 - 15"	7100130	
CXA	3-1/2	5-1/8	3	3/4	1-7/8	6-1/8	7-7/8	13 - 18"	7100135	
CA	4	6-1/4	3-5/8	7/8	2-1/8	7	9	14 - 20"	7100140	

**Features:**

- All working parts hardened and ground.
- No time wasted with shims.
- Completely sealed for maintenance free operation.
- Maximum rigidity for chatter-free performance.
- Speed up lathe operations 90%
- Takes only a few seconds to change tools.

**TOOL HOLDERS (INTERCHANGEABLE WITH MOST POPULAR BRANDS)**  
Precise & Durable

**TURNING AND FACING HOLDERS**

Style No. 1



Takes various sizes of bits. Turning and facing tools can be locked in together. Saves time and labor when changing operations



A	B	C	D	Tool Bit	Order No.	Price
15/16	1/2	7/16	1-1/2	3/16 - 1/2	7101251	
1-1/8	5/8	1/2	1-3/4	1/4 - 5/8	7101301	
1-7/16	3/4	5/8	2-1/8	1/2 - 3/4	7101351	
1-11/16	1	3/4	2-1/2	1/2 - 1	7101401	

**BORING, TURNING AND FACING HOLDERS**

Style No. 2



"V" groove holds round shank boring bars and tools as well as square tool bits. Boring bar not included.



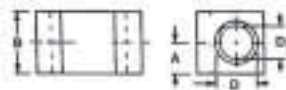
A	B	C	D	Tool Bit	Shank	Order No.	Price
15/16	1/2	7/16	1-1/2	3/16 - 1/2	7/16	7101252	
1-1/8	5/8	1/2	1-3/4	1/4 - 5/8	1/2	7101302	
1-7/16	3/4	5/8	2-1/8	1/2 - 3/4	3/4	7101352	
1-11/16	1	3/4	2-1/2	1/2 - 1	13/16	7101402	

**HEAVY DUTY BORING BAR HOLDERS**

Style Nos. 4 and 41



Equipped with a split bushing to accommodate a boring bar of smaller diameter. It grips with extreme rigidity, cuts smoothly without chatter. Holders supplied with split bushing.



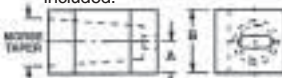
A	B	D	D1	Order No.	Price
3/4	1-1/2	3/4	5/8	7101254	
3/4	1-3/4	1	3/4	7101304	
1	2	1	3/4	7101354	
1-3/8	2-3/4	1-1/4	1	7101404	
7/8	1-3/4	1	3/4	7112541	
1	2	1-1/4	1	7113041	
1-1/8	2-1/4	1-1/4	1	7113541	
1-3/8	2-3/4	1-1/2	1-1/4	7114041	

**MORSE TAPER HOLDER**

Style Nos. 5 and 53



Drills with carriage by using power feed instead of tail stock. Easily centered. For Nos. 2,3 & 4 Morse Taper drills. Drills not included.



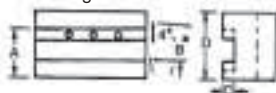
A	B	Taper Hole Size	Order No.	Price	A	B	Taper Hole Size	Order No.	Price
3/4	1-1/2	# 2 MT	7101255		3/4	1-1/2	# 3 MT	7112553	
7/8	1-3/4	# 2 MT	7101305		7/8	1-3/4	# 3 MT	7113053	
1	2	# 3 MT	7101355		1	2-1/8	# 4 MT	7113553	
1-1/4	2-1/2	# 3 MT	7101405		1-1/4	2-1/2	# 4 MT	7114053	

**UNIVERSAL PARTING BLADE HOLDER**

Style No. 7



For bevel as well as T-cut blades. Enables you to cut-off close to chuck. Absence of vibration prevents breaking blades.



A	B	C	D	Blade Hgt	Order No.	Price
13/16	1/2	3/16	1-1/2	1/2	7101257	
1	11/16	3/16	1-3/4	11/16	7101307	
1-3/16	3/4	3/16	2	3/4	7101357	
1-7/16	7/8	1/4	2-1/2	1	7101407	

**KNURLING, TURNING AND FACING HOLDERS**

Style No. 10



For turning and facing as well as knurling. Supplied with a set of high speed precision ground lapped medium diameter knurls. Dimension 3/4" x 3/8" x 1/4"



A	B	C	E	E1	Tool Bit	Order No.	Price
7/8	2-1/2	1-9/16	1/2	3/8	3/16 - 1/2	7112510	
1	2-5/8	1-3/4	5/8	1/2	1/4 - 5/8	7113010	
1-3/16	3-1/8	2	3/4	5/8	1/2 - 3/4	7113510	
1-7/16	3-3/4	2-1/2	1	3/4	1/2 - 1	7114010	

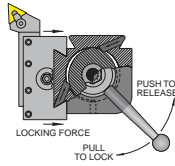
**SUPER Quick Change Tool Post**



**High Performance  
Built to Last . . .  
We Guarantee It!**

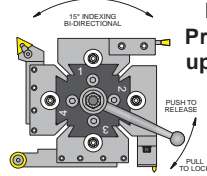
- Repeatability with .00001"
- Zero Backlash
- Maintenance - Free
- US Patented Locking System
- Interchangeable with industry standard Tool Posts

New patented locking system eliminates the worm gear and gib, which are most affected by wear. The new system increases durability and life expectancy of the tool post.



While these are the most popular holders, DORIAN makes many others; please inquire.

**QUADRA Index Tool Post**



**Increase Productivity up to 500%!**



- 4 Quick Change Tool Holder
- 24 Position Indexing System
- 15° Indexing
- .00005 repeatability
- Instant tool repositioning within .00005

The only quick change tool holder & indexing tool post "All-In-One" with precise .00005 repeatability, speed, & rigidity to make your lathe perform like a CNC.



Description Order No.	SD25AXA 6101000	SD30BXA 6101002	SD35CXA 6101004	SD40CA 6101006	SD50DA 6101008	SD60EA 6101010
Price						
Lathe Swing Over Bed	UP-12"	13-15"	14-17"	16-20"	17-32"	25"-XHD
T-Tool Cap.	0.500	0.625	0.750	1.000	1.250	1.500
Optimum C.H.	1.250	1.594	1.750	2.156	2.688	3.000

Description Order No.	QITP25 6100000	QITP30 6100002	QITP35 6100004	QITP40 6110006	QITP50 6110008	QITP60 6110010
Price						
Lathe Swing Over Bed	UP-12"	13-15"	14-17"	16-20"	17-32"	25"-XHD
T-Tool Cap.	0.500	0.625	0.750	1.000	1.250	1.500
Optimum C.H.	1.250	1.437	1.750	2.094	2.750	3.625

**#1 Turning & Facing**

For high speed or carbide square shank tools



Desc.	Order No.	Price	Desc.	Order No.	Price	Shank Size
D25AXA-1	6101100		QITP25-1	6100100		0.500
D30BXA-1	6101250		QITP30-1	6100250		0.625
D35CXA-1	6101400		QITP35-1	6100400		0.750
D40CA-1	6101550		QITP40-1	6100550		1.000
D50DA-1	6101700		QITP50-1	6100700		1.250
D60EA-1	6101850		QITP60-1	6100850		1.500

**#2 Turning, Facing, & Boring**

For high speed & square shank tools, & with a "V" groove for holding a boring bar



Desc.	Order No.	Price	Desc.	Order No.	Price	Bar Cap.
D25AXA-2	6101104		QITP25-2	6100104		0.500
D30BXA-2	6101254		QITP30-2	6100254		0.625
D35CXA-2	6101404		QITP35-2	6100404		0.625
D40CA-2	6101554		QITP40-2	6100554		0.750
D50DA-2	6101704		QITP50-2	6100704		0.875
D60EA-2	6101854		QITP60-2	6100854		1.250

**#4 Heavy Duty Boring**

Precision ground bore with a 360° collar locking system gives the best rigidity in metal removing without scarring the boring bar - Double height adjustment makes the tool reversible for extended center height range



Desc.	Order No.	Price	Desc.	Order No.	Price	Bar Cap.
D25AXA-4	6101110		QITP25-4	6101110		0.750
D30BXA-4	6101260		QITP30-4	6101260		1.000
D35CXA-4	6101410		QITP35-4	6101410		1.000
D40CA-4	6101560		QITP40-4	6101560		1.250
D50DA-4	6101710		QITP50-4	6101710		1.500
D60EA-4	6101860		QITP60-4	6101860		2.000

**#5 Morse Taper**

For holding morse taper tooling.



Desc.	Order No.	Price	Desc.	Order No.	Price	Morse Taper
D25AXA-5-2	6101122		QITP25-5-2	6100122		2
D30BXA-5-3	6101272		QITP30-5-3	6100272		3
D35CXA-5-4	6101424		QITP35-5-4	6100424		4
D40CA-5-4	6101572		QITP40-5-4	6100572		4
D50DA-5-5	6101722		QITP50-5-5	6100722		5
D60EA-5-5	6101872		QITP60-5-5	6100872		5

**#7-71C Reversible Cut-off**

For high speed & Dorcut True Grip blades. It gives max. rigidity & performance in cutting & face grooving. Taper lock system & double height adjustment make the tool reversible for downright positioning.



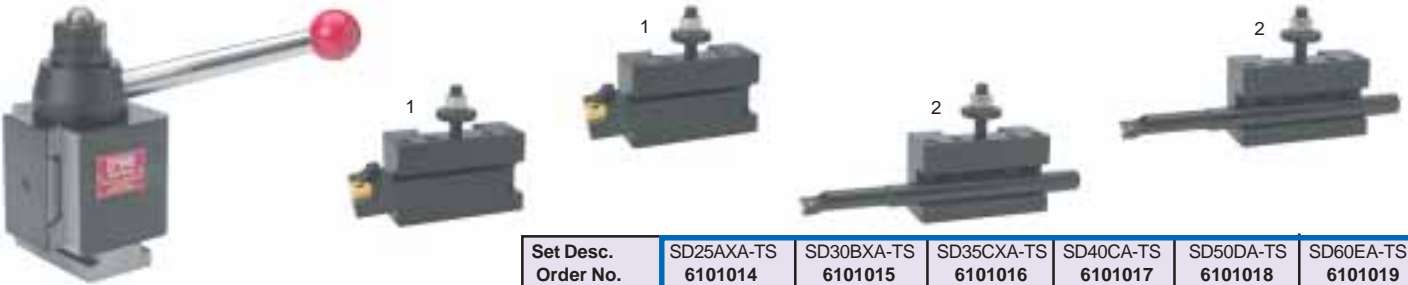
Desc.	Order No.	Price	Desc.	Order No.	Price	Bar Cap.
D25AXA-7-71C	6101126		QITP25-7-71C	6100126		0.750
D30BXA-7-71C	6101276		QITP30-7-71C	6100276		1.000
D35CXA-7-71C	6101428		QITP35-7-71C	6100428		1.000
D40CA-7-71C	6101576		QITP40-7-71C	6100576		1.250
D50DA-7-71C	6101726		QITP50-7-71C	6100726		1.500
D60EA-7-71C	6101876		QITP60-7-71C	6100876		2.000

**#881 O.D. or I.D. Threading**

Capable of covering all threading requirements. Uses standard carbide inserts. Supplied cartridge for external threading with an on-edge insert



Desc.	Order No.	Price	Desc.	Order No.	Price	TNMC Inserts
D25AXA-881	6101132		QITP25-881	6100132		32
D30BXA-881	6101282		QITP30-881	6100282		32
D35CXA-881	6101434		QITP35-881	6100434		32
D40CA-881	6101582		QITP40-881	6100582		32



**Quick Change Tool Post Turning Set**

The Turning Set consists of one tool post and the four holders listed. Tool holders, inserts, and boring bars are not included.

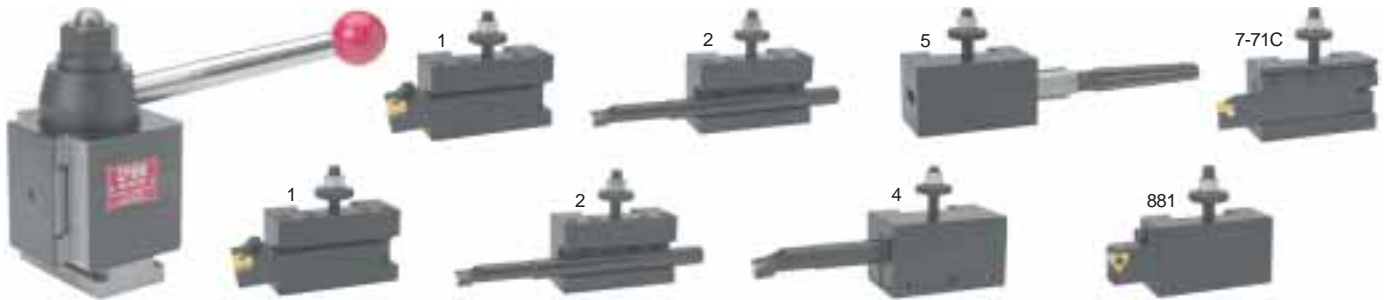
Set Desc. Order No.	SD25AXA-TS 6101014	SD30BXA-TS 6101015	SD35CXA-TS 6101016	SD40CA-TS 6101017	SD50DA-TS 6101018	SD60EA-TS 6101019
Price						
Lathe Swing Over Bed	Up to 12"	13"- 15"	14"- 17"	16"- 20"	17"- 32"	25"-XHD
	<b>Turning Set Includes:</b>					
1-Tool Post	SD25AXA	SD30BXA	SD35CXA	SD40CA	SD50DA	SD60EA
2-Holder No.1	D25AXA-1	30BXA-1	D35CXA-1	D40CA-1	D50DA-1	D60EA-1
2-Holder No.2	D25AXA-2	D30BXA-2	D35CXA-2	D40CA-2	D50DA-2	D60EA-2



**Quick Change Tool Post Classic Set**

The Classic Set consists of one tool post and the five (\*four) holders listed. Tool holders, inserts, and boring bars are not included.

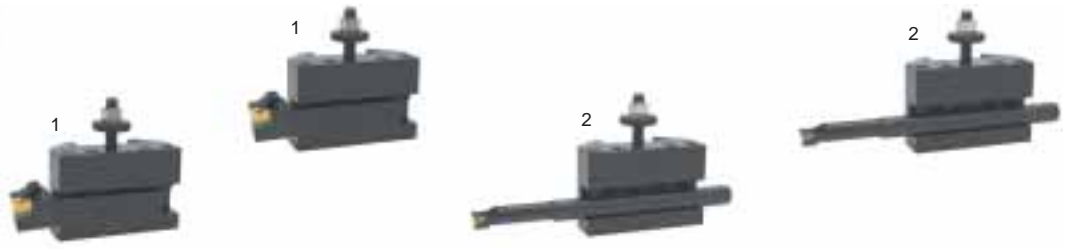
Set Desc. Order No. Price	SD25AXA-CS 6101088	SD30BXA-CS 6101090	SD35CXA-CS 6101092	SD40CA-CS 6101094	SD50DA-CS 6101096*	SD60EA-CS 6101098*
Lathe Swing Over Bed	Open Up to 12"	13"- 15"	14"- 17"	16"- 20"	17"- 32"	25"-XHD
	<b>Classic Set Includes:</b>					
1-Tool Post	SD25AXA	SD30BXA	SD35CXA	SD40CA	SD50DA	SD60EA
2-Holder No.1	D25AXA-1	D30BXA-1	D35CXA-1	D40CA-1	D50DA-1	D60EA-1
1-Holder No.2	D25AXA-2	D30BXA-2	D35CXA-2	D40CA-2	D50DA-2	D60EA-2
1-Holder No.7-71C	D25AXA-7-71C	D30BXA-7-71C	D35CXA-7-71C	D40CA-7-71C	D50DA-7-71C	D60EA-7-71C
1-Holder No.881	D25AXA-881	D30BXA-881	D35CXA-881	D40CA-881	-	-



**Quick Change Tool Post CNC Set**

The CNC Set consists of one tool post and the eight (\*seven) holders listed. Tool holders, inserts, and boring bars are not included.

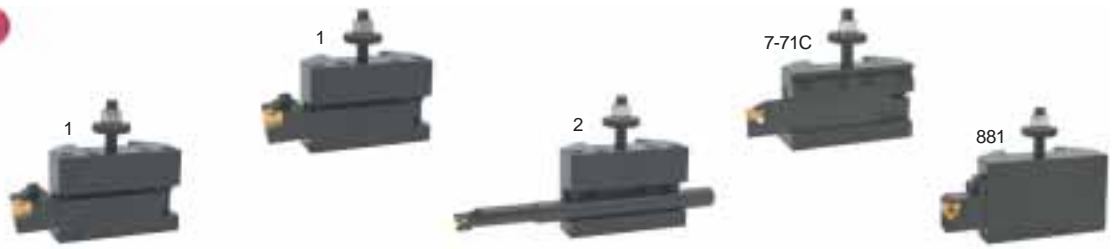
Set Desc. Order No. Price	SD25AXA-CNC 6101042	SD30BXA-CNC 6101044	SD35CXA-CNC 6101046	SD40CA-CNC 6101048	SD50DA-CNC 6101050*	SD60EA-CNC 6101052*
Lathe Swing Over Bed	Open Up to 12"	13"- 15"	14"- 17"	16"- 20"	17"- 32"	25"-XHD
	<b>CNC SETS INCLUDE:</b>					
1-Tool Post	SD25AXA	SD30BXA	SD35CXA	SD40CA	SD50DA	SD60EA
2-Holder No.1	D25AXA-1	D30BXA-1	D35CXA-1	D40CA-1	D50DA-1	D60EA-1
2-Holder No.2	D25AXA-2	D30BXA-2	D35CXA-2	D40CA-2	D50DA-2	D60EA-2
1-Holder No.4	D25AXA-4	D30BXA-4	D35CXA-4	D40CA-4	D50DA-4	D60EA-4
1-Holder No.5	D25AXA-5-2	D30BXA-5-3	D35CXA-5-4	D40CA-5-4	D50DA-5-5	D60EA-5-5
1-Holder No.7-71C	D25AXA-7-71C	D30BXA-7-71C	D35CXA-7-71C	D40CA-7-71C	D50DA-7-71C	D60EA-7-71C
1-Holder No.881	D25AXA-881	D30BXA-881	D35CXA-881	D40CA-881	-	-



**Index Tool Post  
Turning Set**

The Turning Set consists of one tool post and the four holders listed. Tool holders, inserts, and boring bars are not included.

Set Desc. Order No. Price	QITP25-TS 6100014	QITP30-TS 6100015	QITP35-TS 6110016	QITP40-TS 6100017	QITP50-TS 6100018	QITP60-TS 6100019
<b>Lathe Swing Over Bed</b>	up to 12"	13"- 15"	14"- 17"	16"- 20"	17"- 32"	25"-XHD
	<b>TURNING SET INCLUDES:</b>					
1-Tool Post	QITP25	QITP30	QITP35	QITP40	QITP50	QITP60
2-Holder No.1	QITP25-1	QITP30-1	QITP35-1	QITP40-1	QITP50-1	QITP60-1
2-Holder No.2	QITP25-2	QITP30-2	QITP35-2	QITP40-2	QITP50-2	QITP60-2



**Index Tool Post  
Classic Set**

The Classic Set consists of one tool post and the five (\*four) holders listed. Tool holders, inserts, and boring bars are not included.

Set Desc. Order No. Price	QITP25-CS 6100088	QITP30-CS 6100090	QITP35-CS 6100092	QITP40-CS 6100094	QITP50-CS 6100096*	QITP60-CS 6100098*
<b>Lathe Swing Over Bed</b>	up to 12"	13"- 15"	14"- 17"	16"- 20"	17"- 32"	25"-XHD
	<b>CLASSIC SET INCLUDES:</b>					
1-Tool Post	QITP25	QITP30	QITP35	QITP40	QITP50	QITP60
2-Holder No.1	QITP25-1	QITP30-1	QITP35-1	QITP40-1	QITP50-1	QITP60-1
1-Holder No.2	QITP25-2	QITP30-2	QITP35-2	QITP40-2	QITP50-2	QITP60-2
1-Holder No.7-71C	QITP25-7-71C	QITP30-7-71C	QITP35-7-71C	QITP40-7-71C	QITP50-7-71C	QITP60-7-71C
1-Holder No.881	QITP25-881	QITP30-881	QITP35-881	QITP40-881	-	-



**Index Tool Post  
CNC Set**

The CNC Set consists of one tool post and the eight (\*seven) holders listed. Tool holders, inserts, and boring bars are not included.

Set Desc. Order No. Price	QITP25-CNC 6100042	QITP30-CNC 6100044	QITP35-CNC 6100046	QITP40-CNC 6100048	QITP50-CNC 6100050*	QITP60-CNC 6100052*
<b>Lathe Swing Over Bed</b>	up to 12"	13"- 15"	14"- 17"	"16"- 20"	17"- 32"	25"-XHD
	<b>CNC Set Includes:</b>					
1-Tool Post	QITP25	QITP30	QITP35	QITP40	QITP50	QITP60
2-Holder No.1	QITP25-1	QITP30-1	QITP35-1	QITP40-1	QITP50-1	QITP60-1
2-Holder No.2	QITP25-2	QITP30-2	QITP35-2	QITP40-2	QITP50-2	QITP60-2
1-Holder No.4	QITP25-4	QITP30-4	QITP35-4	QITP40-4	QITP50-4	QITP60-4
1-Holder No.5	QITP25-5-2	QITP30-5-3	QITP35-5-4	QITP40-5-4	QITP50-5-5	QITP60-5-5
1-Holder No.771	QITP25-771	QITP30-771	QITP35-771	QITP40-771	QITP50-771	QITP60-771
1-Holder No.881	QITP25-881	QITP30-881	QITP35-881	QITP40-881	-	-

**The First Tool is the Tool That You Will Have for a Lifetime!**



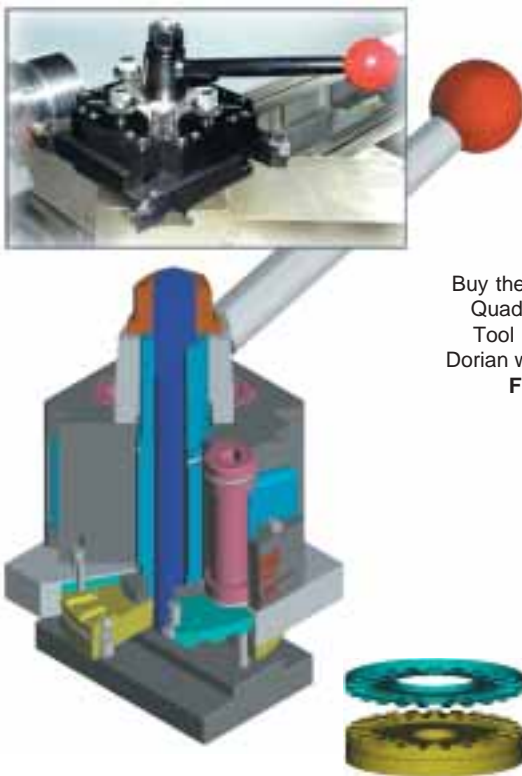
- Maintenance-Free
- Absolute zero backlash
- Holding force produces over 20,000 p.s.i.
- The SQCTP offers repetitive accuracy within millionths.
- The new patented locking system eliminates the traditional worm gear and gib which are the most affected by wear and tear.
- Set includes 1 tool post & 4 holders.
- We will also include 1 square shank tool, 1 boring bar, 1 cut-off blade, 1 internal threading bar, & 4 inserts free of charge!
- Fully interchangeable with all industry standard tool posts.

Buy the five piece Super Quick Change Tool Post Set Dorian will tool it up **FREE**



Super Quick Change Tool Post First Time Buyers Set Includes:				
Tool Post				
No. 1 Turning & facing holder		No. 7-71C Cut-off holder		
No. 2 Turning, facing, & boring bar holder		No. 881 Threading & grooving holder		
Holders Tooled Up At No Charge With:				
1) STNCR toolholder	2) Gold coated TCMT turning & boring inserts	1) Gold coated TNMC threading insert		
1) S-STUCR boring bar	1) High Speed cut-off blade	1) Gold coated Laydown insert		
1) Internal threading bar				
Set Des	SD25AXA-FTB	SD30BXA-FTB	SD35CXA-FTB	SD40CA-FTB
Order No.	6101056	6101058	6101060	6101062
Lathe Swing	Up to 12"	13"-15"	14"-17"	16"-20"
Price				

**For the Relentless Machinist Pursuing High Productivity and Accuracy.**



- Maintenance-Free
- Absolute zero backlash
- Four quick change tool holders locked simultaneously
- The Quadra offers repetitive accuracy within millionths.
- New patented locking system eliminates the traditional worm gear and gib which are the most affected by wear and tear.
- First Time Buyers Set includes 1 tool post and 4 holders.
- We will also include 1 square shank tool, 1 boring bar, 1 cut-off blade, 1 internal threading bar, and 4 inserts free of charge!

Buy the five piece Quadra Index Tool Post Set Dorian will tool it up **FREE**



Quadra Index Tool Post First Time Buyers Set Includes:				
Tool Post				
No. 1 Turning & facing holder		No. 7-71C Cut-off holder		
No. 2 Turning, facing, & boring bar holder		No. 881 Threading & grooving holder		
Holders Tooled Up At No Charge With:				
1) STNCR toolholder	2) Gold coated TCMT turning & boring inserts	1) Gold coated TNMC threading insert		
1) S-STUCR boring bar	1) High Speed cut-off blade	1) Gold coated Laydown insert		
1) Internal threading bar				
Set Desc.	QITP25-FTB	QITP30-FTB	QITP35-FTB	QITB40-FTB
Order No.	6100056	6100058	6100060	6100062
Lathe Swing	Up to 12"	13"-15"	14"-17"	16"-20"
Price				



# TOOL POST SYSTEM

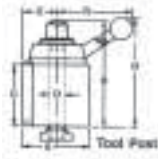
SERIES 954:



**GUARANTEED LASTING REPETITIVE ACCURACY TO WITHIN MILLIONTHS**

**FEATURES:**

- Only a second to change tools
- Rugged - no chatter or vibration
- No time wasted with shims
- Unlimited versatility • Safe and simple to operate
- Speed your lathe operations up to 90%
- Guaranteed\*



## ALORIS SUPER- PRECISION TOOL POST

Precision engineered to assure repetitive accuracy. Advanced design provides built-in quick tool changing versatility with positive rigidity to meet the most exacting working tolerance. Quickly and easily installed on any engine lathe, bench or CNC lathe, for a wide range of operations - from fine precision work to heavy duty cutting.

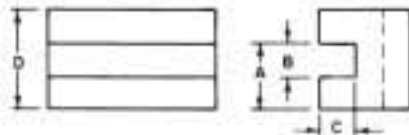


A	B	C	D	E	H	R	SWING	Model No	Order No.	Price
2-1/2"	3-7/8"	2-1/4"	9/16"	1-3/8"	4-11/16"	5-3/4"	UP to 12"	AXA	<b>9541000</b>	
3"	4-5/8"	2-3/4"	5/8"	1-5/8"	5-9/16"	7-5/16"	10-15"	BXA	<b>9542000</b>	
3-1/2"	5-1/8"	3"	3/4"	1-7/8"	6-1/8"	7-7/8"	13-18"	CXA	<b>9543000</b>	
4"	6-1/4"	3-5/8"	7/8"	2-1/8"	7"	9"	14-20"	CA	<b>9544000</b>	
5"	7-5/8"	4-5/8"	1"	2-11/16"	8-3/4"	10-7/8"	17-48"	DA	<b>9545000</b>	
6"	8-1/2"	5"	1-1/4"	3-1/8"	10"	13-3/4"	25" + up	EA	<b>9546000</b>	

\* This guarantee does not include repair or replacement due to misuse, abuse, accidental damage or normal wear

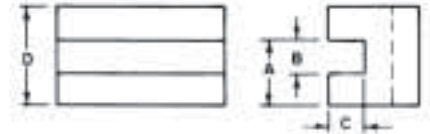
## 1# TURNING AND FACING HOLDER

Takes various sizes of bits. Turning and facing tools can be locked in together. Saves time and labor when changing operations



A	B	C	D	Tool Bit	Model No	Order No	Price
15/16"	1/2"	7/16"	1-1/2"	3/16"-1/2"	AXA1	<b>9541010</b>	
1-1/8"	5/8"	1/2"	1-3/4"	1/4 - 5/8"	BXA1	<b>9541020</b>	
1-7/16"	3/4"	5/8"	2-1/8"	1/2 - 3/4"	CXA1	<b>9541030</b>	
1-11/16"	1"	3/4"	2-1/2"	1/2 - 1"	CA1	<b>9541040</b>	
2-3/16"	1-1/4"	1"	3-1/8"	1/2 - 1-1/4"	DA1	<b>9541050</b>	
2-11/16"	1-1/2"	1-1/4"	4"	3/4 - 1-1/2"	EA1	<b>9541060</b>	

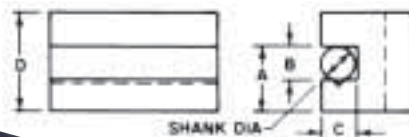
## #7 UNIVERSAL PARTING BLADE HOLDER



#7 Holders are only for use with T-Type blades, or with bevel (wedge-shape) blades having parallel top and bottom edges, as shown above. Enables you to cut-off close to chuck. Absence of vibration prevents breaking blades.

A	B	C	D	Blade Height	Model No	Order No	Price
13/16"	1/2"	3/16"	1-1/2"	1/2"	AXA7	<b>9547010</b>	
1"	11/16"	3/16"	1-3/4"	11/16"	BXA7	<b>9547020</b>	
1-3/16"	3/4"	3/16"	2"	3/4"	CXA7	<b>9547030</b>	
1-7/16"	7/8"	1/4"	2-1/2"	7/8"	CA7	<b>9547040</b>	
1-3/4"	1-1/8"	1/4"	2-3/4"	1-1/8"	DA7	<b>9547050</b>	
1-7/8"	1-1/8"	1/4"	3"	1-1/8"	EA7	<b>9547060</b>	

## 2# BORING, TURNING & FACING HOLDER



"V" groove holds round shank boring bars and tools as well as square tool bits.

A	B	C	D	Shank	Tool Bit	Model No	Order No.	Price
15/16"	1/2"	7/16"	1-1/2"	7/16"	3/16 - 1/2"	AXA2	<b>9542010</b>	
1-1/8"	5/8"	1/2"	1-3/4"	1/2"	1/4 - 5/8"	BXA2	<b>9542020</b>	
1-7/16"	3/4"	5/8"	2-1/8"	3/4"	1/2 - 3/4"	CXA2	<b>9542030</b>	
1-11/16"	1"	3/4"	2-1/2"	13/16"	1/2 - 1"	CA2	<b>9542040</b>	
2-3/16"	1-1/4"	1"	3-1/8"	1"	1/2 - 1-1/4"	DA2	<b>9542050</b>	
2-11/16"	1-1/2"	1-1/4"	4"	1-1/4"	3/4 - 1-1/2"	EA2	<b>9542060</b>	

## #4D BORING AND FACING HOLDER

Precision ground bore and split clamping design to accommodate excellent clamping pressure and the ability to adjust positive to negative cutting angle on boring bar. Bushings sold separately.



A	B	D	Model No.	Order No.	Price
3/4"	1-1/2"	3/4"	AXA-4D	<b>9544010</b>	
1"	2"	1"	BXA-4D	<b>9544020</b>	
1"	2"	1"	CXA-4D	<b>9544030</b>	
1-3/8"	2-3/4"	1-1/4"	CA-4D	<b>9544040</b>	
1-5/8"	3-1/4"	1-1/2"	DA-4D	<b>9544050</b>	
2-1/4"	4-1/2"	2-1/2"	EA-4D	<b>9544060</b>	

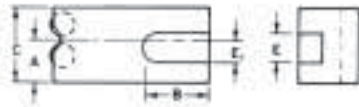


# TOOL POST SYSTEM

SERIES 954:



## #10 KNURLING, FACING AND TURNING HOLDER



For turning and facing as well as knurling. Supplied with a set of high speed precision ground and lapped medium diamond knurls. Easily replaceable.

Holder supplied with 2 knurls.

A	B	C	E	E1	Model No	Tool Bit	Order No.	Price
7/8"	2-1/2"	1-9/16"	1/2"	3/8"	AXA-10	3/16 - 1/2"	9541001	
1"	2-5/8"	1-3/4"	5/8"	1/2"	BXA-10	1/4 - 5/8"	9541002	
1-3/16"	3-1/8"	2"	3/4"	5/8"	CXA-10	1/2 - 3/4"	9541003	
1-7/16"	3-3/4"	2-1/2"	1"	3/4"	CA-10	1/2 - 1"	9541004	
1-7/8"	4-1/2"	3-1/8"	1-1/4"	1"	DA-10	1/2 - 1-1/4"	9541005	

## 5 PIECE SET

"5 PC" SET CONSISTS OF THE FOLLOWING: Tool Post, Custom "T"- Bolt & Holders shown below (#1, 2, 4D, & 7).



Series	Model No.	Order No.	Price
AXA	1-BS	9540101	
BXA	2-BS	9540102	
CXA	3-BS	9540103	
CA	4-BS	9540104	
DA	5-BS	9540105	
EA	6-BS	9540106	

## TOOL POST TURRETS

SERIES 300:



- 4 Tools can be mounted and quickly indexed into any of 12 different positions.
- Indexing stations are spaced 30° apart.
- All essential parts are hardened for long life and made to highest accuracy standards for utmost precision.
- All models furnished with a machineable base to fit your machine.

Model No.	Size	Swing of Lathe	Tool Range	Order No.	Price
TP2	2-1/2"	6-12"	1/4-3/8"	7250002	
TP3	3-1/2"	10-13"	3/8-1/2"	7250003	
TP4	4-1/2"	13-16"	1/2-3/4"	7250004	
TP6	6"	14-21"	7/8-1-1/4" or No.2 Tool Holder	7250006	

## #71 CUT-OFF AND GROOVING HOLDER



Designed for extremely high rigidity under heavy duty conditions, and cool chatter free operation at higher speeds. Two different blades can be used with this holder: self-locking throwaway insert blade, or reversible blade with brazed-in carbide tips. The chip-breaker is an integral part of the blade and cannot be lifted by broken chips.

A	B	Used with blade widths	Model No.	Order No.	Price
15/16"	1-13/16"	1/8, 3/16, or 1/4"	AXA71	9547110	
15/16"	2"	1/8, 3/16, or 1/4"	BXA71	9547120	
1-5/16"	2-3/8"	1/8, 3/16, or 1/4"	CXA71	9547130	
1-7/8"	3-1/4"	3/16 or 1/4"	CA71	9547140	
2"	3-1/4"	3/16 or 1/4"	DA71	9547150	
2-1/16"	3-3/8"	3/16 or 1/4"	EA71	9547160	

## QUICK CHANGE TOOL POST

SERIES 300:



- Useful tool post for quick changing
- Great for mini lathes
- Hardened and tempered body
- Comes with three hex keys
- Holder capacity up to 1/2" shank tools



Tool Post Size		Holder size	
inch	mm	inch	mm
2-3/8 x 2-1/4 x 1-1/4	60 x 55 x 30	2-3/16x1x1	55 x 25 x 25

Order No. 7300100

Price:

## TAILSTOCK TURRETS

SERIES 300:



- Have 6 holes for holding 6 tools.
- Precision made for highest accuracy.
- Available in 2 sizes with different shanks.
- Conveniently located lever provides instant change-over from one tool to another.

Model No.	Dia. of Head	Hole Size	Shank	Order No.	Price
TTA	2-1/2"	5/8"	M.T.1	7301001	
TTA	2-1/2"	5/8"	M.T.2	7301002	
TTB	5"	1"	M.T.2	7302002	
TTB	5"	1"	M.T.3	7302003	
TTB	5"	1"	M.T.4	7302004	
TTB	5"	1"	1" S.S.	7302010	