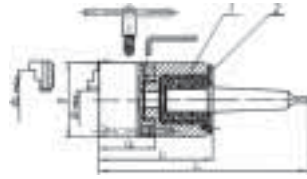


ROTATING CHUCKS WITH MT SHANKS, THREE-JAW SELF CENTERING WITH FINE ADJUSTMENT

SERIES 645:

SET-TRU .0005" T.I.R.

- These precision chucks are used in tail stocks for jobs where centers can not be used (example: machining of tube).
- Steel body.
- Hardened and ground scroll and pinions.
- Hardened and ground MT shank.
- Sealed ball bearings: lubrication through oiler.
- 4 fine adjustment screws provide .0005 T.I.R. repeatability.



Rotating chucks are provided in a wooden case.



Standard Accessories:

4" 2-sets of hard solid jaws (ID & OD), 1 chuck wrench and 1 hex key.
5" & 6" 1 set of two-piece reversible jaws (hard top jaws & hard master jaws), 1 chuck wrench and 1 hex key.

Optional Accessories:

4" soft solid jaws,
5" & 6" soft top jaws,
6-Jaw SET-TRU chuck,
5" 5C Collet Chuck



Chuck Dia.	Max. R.P.M.	MT No.	Weight lbs.	Rotating Chuck Order No.	Price
4"	3500	3	13.5	8610400	
5"	3200	4	25.0	8610500	
6-1/4"	3000	5	34.0	8610600	

9164

ROTATING CHUCKS WITH MT SHANKS, THREE-JAW SELF CENTERING

SERIES 645:

These precision rotating chucks are used in tailstocks for jobs where centers cannot be used (example: machining of tube).

- Steel body.
- Hardened and ground scroll and pinions.
- Hardened and ground MT shank.
- Sealed ball bearings lubrication through oiler.
- 3-Jaw Lathe Chucks and can be easily removed and replaced by 4-Jaw Scroll Chucks (5", 6"), Faceplate (6"), and by the 5C Collet Chuck (5").

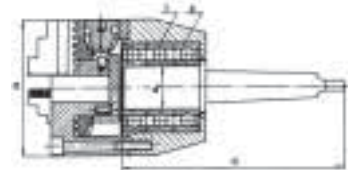


Standard Accessories:

3" & 4" 2-sets of hard solid jaws (ID & OD), 1 chuck wrench and 1 hex key.
5" & 6" 1-set of two-piece reversible jaws (hard top jaws & hard master jaws), 1 chuck wrench and 1 hex key.

Optional Accessories:

3" & 4" soft solid jaws,
5" & 6" soft top jaws,
4-Jaw Scroll Chuck,
6" Faceplate and 5" 5C Collet Chuck.



Rotating chucks are provided in a wooden case.

5" & 6" with American Standard Two-Piece Tongue & Groove Jaws

Chuck Dia.	Max. R.P.M.	MT No.	Weight lbs.	Solid Jaws 9154		2-Piece Jaws 9155	
				Order No.	Price	Order No.	Price
3"	4000	2	8.0	8600300		-	
4"	3500	3	13.5	8600400		-	
5"	3200	4	25.0	8600500		8650500	
6-1/4"	3000	5	34.0	8600600		8650600	

3" LATHE CHUCKS WITH 5C MOUNT

SERIES 995:

- For use in fixtures and 5C spindles for economical set-up
- Hole thru 5C adaptor .75"



4 - Jaw

3 - Jaw Order No 6000330
4 - Jaw Order No 6000063

Price:



SUPER PRECISION 5C COLLET CHUCKS WITH FINE ADJUSTMENT

SERIES 292:



FOR MOUNTING WITH ADAPTER PLATES (SEE BELOW)
0.0004" T.I.R. AND 6000 R.P.M.

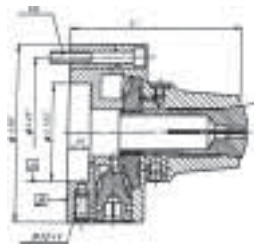
The Super Precision 5C Collet Chucks are designed for use with all 5C Collets. They can be used for turning, facing, boring, grinding and milling operations on center lathes and grinding machines. The simple key operated scroll provides a uniform, distortion free clamping of the workpiece and low collet exchange time.

Four fine adjustment screws are used to set up the chuck on its mounting plate to get precision within .0004" T.I.R. on duplicate parts. Outstanding accuracy, low cost, versatility and long life make **BISON 5" 5-C SET TRU** Chucks invaluable in the workshop and indispensable in the toolroom.

BODY - made of high quality **FORGED STEEL**.
FORGED SCROLL - fully hardened & ground for longer life.
PINIONS - hardened and ground.

Standard Accessories:

- 1 Chuck Wrench,
- 1 set of mounting bolts,
- 1 hex key.



3960-5C

Chuck Dia.	5C Collet Holding Capacity In.	R.P.M.	Weight lbs.	Order No.	Price
5"	3/64 x 1-1/8	6000	12	9620505	

FULLY MACHINED STEEL ADAPTERS FOR A, D, DIN AND THREADED SPINDLES

SERIES 266:



Chuck Dia.	Taper Size	Order No.	Price
5"	A-4	7874054	
	A-5	7874855	
	A-6	7874056	
	D1-3	7875053	
	D1-4	7875054	
	D1-5	7875055	
	D1-6	7875056	
	L00	879905	
	1" x 10	7876051	
	1-1/2" x 8	7876052	
	2-3/16" x 10	7876054	
	2-1/4" x 8	7876056	
	C-5 / DIN-5	7920055	



5C COLLET CHUCKS

SERIES 292:



FOR MOUNTING WITH ADAPTER PLATES (SEE BELOW) 6000 R.P.M.

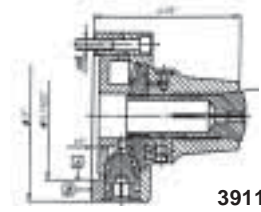
The 5C Collet Chucks are designed for use with all 5C Collets. They can be used for turning, facing, boring, grinding and milling operations on center lathes and grinding machines.

The simple key operated scroll provides a uniform, distortion free clamping of workpieces and low collet exchange times. Their simple design, rugged construction and fine workmanship assures high quality and long service life.

BODY - made of high quality **FORGED STEEL**.
FORGED SCROLL - fully hardened and ground for longer life.
PINIONS - hardened and ground.

Standard Accessories:

- 1 Chuck Wrench, 1 set of mounting bolts, 1 Hex Key.



3911-5C

Chuck Dia.	5C Collet Holding Capacity In.	R.P.M.	Weight lbs.	Order No.	Price
5"	3/64 x 1-1/8	6000	10	620501	

MACHINED ADAPTERS FOR A, D, DIN, NST & THREADED LATHE SPINDLES

SERIES 291:



Chuck Dia.	Taper Size	Order No.	Price
5"	A-6	7877001	
	A-8	7877002	
	D1-3	7878053	
	D1-4	7878054	
	D1-5	7878055	
	D1-6	7878056	
	L00	7879051	
	NST 50	7915505	
	C-5 / DIN-5	7921055	
	M39 x 4	7922051	
2-3/16" - 10	7922053		



SEMI-MACHINED ADAPTERS FOR THREADED LATHE SPINDLES

SERIES 291:

Chuck Dia.	Spindle Size	Order No.	Price
5"	1 x 10	7871051	
	1-1/2 x 8	7871052	
	Rough	7870105	

